

SERVICE BULLETIN

Number 20141121

Date 21/11/2014



ABN: 55 051 202 067

Title: Solution for water dripping from Evaporator region.

Models effected: XX ASR680, XX ASR1370, XX ASR2055

Reason: Earlier designs of the drip trays fitted did not cover the accumulator, suction line or return bends. Under high humidity and frequent door opening conditions, condensation forms on the accumulator and drips onto the Evaporator-Cover which is not part of the drainage system.

Sales and Logistics Office

Unit 1/35 Rimfire Drive

Hallam, VIC 3803

Phone: 03 8786 3570

Fax: 07 5462 8396

sales@austwiderentals.com

Accounts & Administration Office

PO Box 6709, Upper Mt Gravatt, QLD

Phone: 07 5462 8386

Fax: 07 5462 8396

Fax: admin@austwiderentals.com

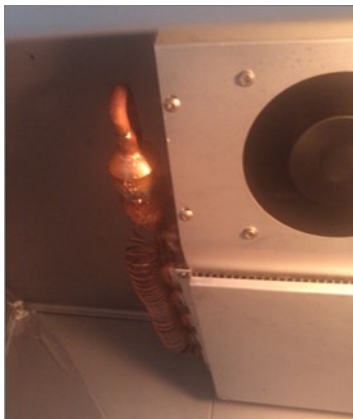
www.austwiderentals.com

ITEMS REQUIRED:

1. Aeroflex or similar insulation.
2. Cable Ties.
3. 2 x 8 guage self tapping screws.
4. New Version Drip-Tray.

METHOD:

1. Remove Evaporator-Cover and Drip-Tray.
2. Cover accumulator with Aeroflex. Securing with cable ties.
3. Use 2 x 8 gauge self tapping screws to attached the new Drip-Tray to the Evaporator-Cover.
4. Re-install Evaporator –Cover.



Accumulator Sitting forward of evaporator. Drip-tray only below finned area of evaporator.



Accumulator covered with Aeroflex



New larger drip-tray screwed to Evaporator-Cover