

Austwide Sales & Rentals Pty Ltd

A.B.N. 55 051 202 067



PRICE GUIDE

2nd OCTOBER 2019

ALL PRICES ARE EX GST, FREIGHT AND INSURANCE

1800 813 987

Fax: 03 8786 3572

Email: sales@austwiderentals.com

VIC Warehouse: Unit 1/35 Rimfire Drive
& Showroom Hallam, VIC, 3803
(Drop in Mon - Fri)

QLD Warehouse: Yatala. (by appointment only)

Websites: www.austwiderefrigeration.com



| | |
|------------------------------------------------------------------------------------|---------|
|  | Page 3 |
|  | Page 5 |
|  | Page 7 |
|  | Page 7 |
|  | Page 8- |
|  | Page 14 |
|  | Page 17 |
|  | Page 20 |
|  | Page 22 |
|  | Page 25 |
|  | Page 25 |
|  | Page 26 |
|  | Page 26 |
|  | Page 28 |
|  | Page 31 |
|  | Page 32 |
|  | Page 33 |

NOTES:



ASR680
ASF680



ASR1370
ASF1370



ASR2055
ASF2055



ASR UPRIGHT REFRIGERATORS & FREEZER

| | | |
|---------------------------------------------------|-----------------------|------------|
| ASR680 | 1 Door Refrigerator | \$ 3490.00 |
| ASF680 | 1 Door Freezer | \$ 4057.00 |
| Dims(mm): 736W x 818D x 2095H, Vol 584L, W 165kg | | |
| ASR1370 | 2 Door Refrigerator | \$ 5053.00 |
| ASF1370 | 2 Door Freezer | \$ 5582.00 |
| Dims(mm): 1371Wx 818D x 2095H, Vol 1170L, W 235kg | | |
| ASR2055 | 3 Door Refrigerator | \$ 6276.00 |
| ASF2055 | 3 Door Freezer | \$ 7648.00 |
| Dims(mm): 2054Wx 818D x 2095H, Vol 1881L, W 304kg | | |



ASR161
ASF121



ASR UNDER COUNTER AND COUNTER REFRIGERATORS AND FREEZERS

| | | |
|--------------------------------------|--------------------------------------|-------------|
| ASR161 | 1 Door, Under Counter Refrigerator | \$ 1,537.00 |
| ASF121 | 1 Door, Under Counter Freezer | \$ 1,588.00 |
| Dims(mm): 595W x 628D x 830H, W 51kg | | |



AGB30-6L2
AGB30-7L2
AFB30-7L2



AGB50-6L3
AGB50-7L3
AFB50-7L3



ASR HORIZONTAL BENCH REFRIGERATORS & FREEZER

| | | |
|--------------------------------------------------|-----------------------|-------------|
| AGB30-6L2 | 2 Door Refrigerator | \$ 2,600.00 |
| Dims(mm): 1400W x 600D x 880H, Vol 265L, W 103kg | | |
| AGB30-7L2 | 2 Door Refrigerator | \$ 2,600.00 |
| AFB30-7L2 | 2 Door Freezer | \$ 3,100.00 |
| Dims(mm): 1400W x 700D x 880H, Vol 318L, W 123kg | | |
| AGB50-6L3 | 3 Door Refrigerator | \$ 2,850.00 |
| Dims(mm): 1875W x 600D x 880H, Vol 412L, W 132kg | | |
| AGB50-7L3 | 3 Door Refrigerator | \$ 2,850.00 |
| Dims(mm): 1875Wx 700D x 880H, Vol 495L, W 136kg | | |



APP1200



APP1800



APP2400



PIZZA PREP REFRIGERATORS

| | | |
|---------|-----------------------------------------------------------------------------------------------------|-------------|
| APP1200 | 1 door, PIZZA PREP with 6 x 1/3 Pots Dims(mm) W*D*H: 1266 x 800 x 1088, Vol 391L, W 135kg | \$ 3,650.00 |
| APP1800 | 2 door, PIZZA PREP with 9 x 1/3 refig Pots Dims(mm) W*D*H: 1800 x 800 x 1088, Vol 651L, W 186kg | \$ 4,550.00 |
| APP2400 | 3 door, PIZZA PREP with 12 x 1/3 refig Pots Dims(mm) W*D*H: 2334 x 800 x 1088, Vol 878L, W 216kg | \$ 5,840.00 |



ASP700



ASP1225 / ASP1555



ASP1800



SANDWICH PREP REFRIGERATORS

| | | |
|---------|----------------------------------------------------------------------------------------------|-------------|
| ASP700 | 1 Door, SANDWICH PREP with 8 x 1/6 Pots Dims(mm): 698W x 750D x1075H, Vol 160L, W 80kg | \$ 2,750.00 |
| ASP1225 | 2 Door, SANDWICH PREP with 12 x 1/6 Pots Dims(mm): 1188W x 750D x1075H, Vol 268L, W 115kg | \$ 3,240.00 |
| ASP1555 | 2 Door, SANDWICH PREP with 16 x 1/6 Pots Dims(mm): 1529W x 750D x1075H, Vol 428L, W 158kg | \$ 3,610.00 |
| ASP1800 | 3 Door, SANDWICH PREP with 18 x 1/6 Pots Dims(mm): 1787 Wx 750D x1075H, Vol 440L, W 175kg | \$ 4,040.00 |



ASP1225GL



SANDWICH PREP REFRIGERATORS FITTED WITH GLASS CANOPY

| | | |
|-----------|----------------------------------------------------------------------------------------------|-------------|
| ASP700GL | 1 Door, SANDWICH PREP with 8 x 1/6 Pots Dims(mm): 698W x 750D x1310H, Vol 160L, W 100kg | \$ 4,776.00 |
| ASP1225GL | 2 Door, SANDWICH PREP with 12 x 1/6 Pots Dims(mm): 1188W x 750D x1310H, Vol 268L, W 125kg | \$ 5,508.00 |
| ASP1555GL | 2 Door, SANDWICH PREP with 16 x 1/6 Pots Dims(mm): 1529W x 750D x1310H, Vol 428L, W 168kg | \$ 6,012.00 |
| ASP1800GL | 3 Door, SANDWICH PREP with 18 x 1/6 Pots Dims(mm): 1787 Wx 750D x1310H, Vol 440L, W 185kg | \$ 6,648.00 |

These cabinets are the standard Sandwich Prep Refrigerators (ASP above) with modifications. The standard Stainless steel cover is removed. The ASP is then fitted with a Glass Canopy which is open to the back and fitted with a mid shelf. Perspex sliding lids with removable slides are then fitted to cover the Gastronorm pots. These sliding lids need to be in place to maintain correct pot temperatures. Refer to brochure for more detail.



AGN350TN



AGN350BT



HT ASF680



HT ASF1370



SLIM LINE MODEL REFRIGERATOR & FREEZER, GASTRONORM 1/1 SIZED.

| | | |
|--------------------------------------------------|-----------------------|-------------|
| AGN350TN | 1 Door Refrigerator | \$ 2,989.00 |
| AGN350BT | 1 Door Freezer | \$ 3,490.00 |
| Dims(mm): 490W x 740D x 2000H, Vol 350L, W 158kg | | |

FULL SIZED REFRIGERATOR & FREEZER,

| | | | |
|------------|-------------------------|----------------------------------------------------|-------------|
| HT ASR680 | 1 Door Refrigerator, | Dims(mm): 680W x 830D x 2100H, Vol 589L, W 165kg | \$ 3,490.00 |
| HT ASF680 | 1 Door Freezer , | Dims(mm): 680W x 830D x 2100H, Vol 589L, W 165kg | \$ 4,057.00 |
| HT ASR1370 | 2 Door Refrigerator, | Dims(mm): 1370W x 830D x 2100H, Vol 1306L, W 235kg | \$ 5,053.00 |
| HT ASF1370 | 2 Door Freezer , | Dims(mm): 1370W x 830D x 2100H, Vol 1306L, W 235kg | \$ 5,582.00 |



GFG925S



GFG1365S



GFG1365G



GFG1800S



GFG1800G



GFG2200S



GFG2200G



GASTRONORM 1/1 SIZED, STAINLESS STEEL INT / EXT, CHEFS PREP & DISPLAY COUNTERS.

| | | | |
|----------|---------------------------------------------------------|--------------------------------------------------|-------------|
| GFG925S | 1 Solid Door Refrigerator | Dims(mm): 925W x 700D x 860H, Vol 324L, W 113kg | \$ 2,342.00 |
| GFG1365S | 2 Solid Door, S/S Top, Interior & exterior refrigerator | | \$ 2,783.00 |
| GFG1365G | 2 Glass Door, S/S Top, Interior & exterior refrigerator | Dims(mm): 1365W x 700D x 860H, Vol 324L, W 113kg | \$ 2,867.00 |
| GFG1800S | 3 solid door, S/S Top, Interior & exterior refrigerator | | \$ 3,003.00 |
| GFG1800G | 3 glass door, S/S Top, Interior & exterior refrigerator | Dims(mm): 1800W x 700D x 860H, Vol 432L, W 155kg | \$ 3,119.00 |
| GFG2200S | 4 solid door, S/S Top, Interior & exterior refrigerator | | \$ 3,287.00 |
| GFG2200G | 4 glass door, S/S Top, Interior & exterior refrigerator | Dims(mm): 2200W x 700D x 860H, Vol 542L, W 173kg | \$ 3,455.00 |

Casters are supplied as standard. Legs Optional



GFG925-2D-2



GFG1365-2D-2



GFG1365-2D-2



GFG1800-2D-2



GFG1800-2D-4



GFG1800-2D-6

UNDER BENCH with CHEF Drawers.

| | | | |
|--------------|-------------------------------------------------------------|--------------------------------------------------|-------------|
| GFG925-2D-2 | 2 Drawer , S/S Top, Interior & exterior refrigerator | Dims(mm): 1365W x 700D x 860H, Vol 324L, W 95kg | \$ 3,155.00 |
| GFG1365-2D-2 | 1 door, 2 Drawer, S/S Top, Interior & exterior refrigerator | | \$ 3,633.00 |
| GFG1365-2D-4 | 4 Drawer, S/S Top, Interior & exterior refrigerator | Dims(mm): 1365W x 700D x 860H, Vol 324L, W 133kg | \$ 4,699.00 |
| GFG1800-2D-2 | 2 door, 2 Drawer, S/S Top, Interior & exterior refrigerator | | \$ 3,875.00 |
| GFG1800-2D-4 | 1 door, 4 Drawer, S/S Top, Interior & exterior refrigerator | | \$ 4,883.00 |
| GFG1800-2D-6 | 3 glass door, S/S Top, Interior & exterior refrigerator | Dims(mm): 1800W x 700D x 860H, Vol 432L, W 185kg | \$ 5,933.00 |

Casters are supplied as standard. Legs Optional



A-BFD2-2



A-BFD2-3

GASTRONORM 1/1 SIZED, STAINLESS STEEL INT/EXT, CHEFS PREP COUNTERS

| | | |
|----------------|-------------------------------------------------------|-------------|
| AS901 S/S Top | 2 door prep refrigerator, castors | \$ 3,396.00 |
| AS901-2D | Half drawers 1 solid door prep refrigerator, castors | \$ 4,200.00 |
| AS901-4D | 4 half drawers prep refrigerator, castors | \$ 5,052.00 |
| | Dims(mm): 900W x 700D x 960H, Vol 260L, 95kg | |
| AS903 S/S Top* | 3 door prep refrigerator, castors | \$ 3,804.00 |
| | Dims(mm): 1365W x 700D x 960H, Vol 390L, 110kg | |
| Options | OPTIONS GLASS DOOR REPLACING SOLID DOOR, PER DOOR ADD | \$ 264.00 |

| | | |
|-----------|-----------------------------------------------------------|-------------|
| A-BFD2-2 | 2 Drawer, 4x 1/1 Gastronorm Capacity Flexi Temp Chef Base | \$ 5,052.00 |
| | Dims(mm): 905W x 700D x 840H, Vol 180L, 110kg | |
| A-BFD2-3* | 2 Drawer, 6x 1/1 Gastronorm Capacity Flexi Temp Chef Base | \$ 5,652.00 |
| | Dims(mm): 1220W x 700D x 840H, Vol 180L, 110kg | |



AGD420
AFD420



AGD920
AFD930



SHAMROCK GLASS DOOR REFRIGERATORS & FREEZERS.

| | | |
|--------|----------------------------------------------------|-------------|
| AGD420 | 1 door refrigerator, 430L capacity, | \$ 2,470.00 |
| AFD420 | 1 door Freezer , 430L capacity | \$ 4,536.00 |
| | Dims(mm) W*D*H: 680 x 720 x 2075, Vol 420L, 138kg | |
| AGD920 | 2 door refrigerator, 920L capacity | \$ 3,150.00 |
| AFD930 | 2 door Freezer , 920L capacity | \$ 6,098.00 |
| | Dims(mm) W*D*H: 1370 x 720 x 2075, Vol 920L, 227kg | |



F400S



F500S
F600S



ABD768S/S



CHEST FREEZERS

| | | |
|-----------|-------------------------------------------------------------------------------------------------|-------------|
| F400S* | 370L, Chest Freezer with Stainless Steel Top | \$ 2016.00 |
| | Dims(mm) W*D*H: 1395 x 660 x 930, Vol 370L, 78kg | |
| F500S | 503L, Chest Freezer with Stainless Steel Top | \$ 2,218.00 |
| | Dims(mm) W*D*H: 1795 x 660 x 930, Vol 503L, 89kg | |
| F600S* | 570L, Chest Freezer with Stainless Steel Top | \$ 2,419.00 |
| | Dims(mm) W*D*H: 1995 x 660 x 930, Vol 570L, 94kg | |
| ABD768S/S | 768L, Chest Freezer with Split Stainless Steel Top | \$ 2,608.00 |
| | Dims(mm) W*D*H: 1850 x 815 x 1010, Vol 768L, 112kg | |
| FEATURES | Danfoss compressor, 2 x baskets standard, castors, Spring loaded Hinges, LCD temp display, pre- | |

* Not normally held in Stock. Special order required. Please ring for details.



ME-S6



ME-S7



ME-D10



ME-T16

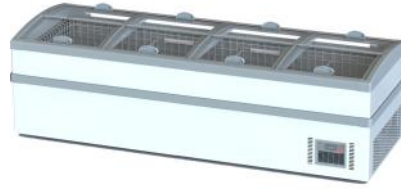


ME SERIES: GLASS DOOR REFRIGERATORS. *Designed for 43° Ambient*

| | | |
|--------|-------------------------------------------------------|-------------|
| ME-S6 | 1 Door Refrigerator | \$ 2,583.00 |
| | Dims(mm) W*D*H: 690 x 800 x 2098, Vol 650L, W 112kg | |
| ME-S7* | 1 Door Refrigerator. | \$ 2,583.00 |
| | Dims(mm) W*D*H: 770 x 800 x 2098, Vol 720L, W 128kg | |
| ME-D10 | 2 Door Refrigerator. | \$ 2,759.00 |
| | Dims(mm) W*D*H: 1160 x 720 x 2098, Vol 1020L, W 203kg | |
| ME-T16 | 3 Door Refrigerator. | \$ 3,830.00 |
| | Dims(mm) W*D*H: 1750 x 720 x 2098, Vol 1590L, W 279kg | |



ZCD800S



ZCD1000S



ISLAND FREEZERS, GLASS SLIDING LID TYPE,

| | | |
|-----------------|------------------------------------------------------------------------------------------------------------------|-------------|
| ZCD800S* | Auto Defrost Island Freezer, with curved glass lids. | \$ 3,761.00 |
| | Dims(mm) W*D*H: 2013 x 963 x 780, Vol 800L, W 203kg | |
| ZCD1000S | Auto Defrost Island Freezer, with curved glass lids. | \$ 4,177.00 |
| | Dims(mm) W*D*H: 2513 x 963 x 780, Vol 1000L, W 279kg | |
| FEATURES | Danfoss compressor, adjustable Shelf divider system, castors, bump rail, , LCD temp display, pre-painted finish. | |



TROPICALE ICE MAKER AND DISPENSER

| | | |
|----------|------------------------------------------------------------------|-------------|
| AIM-25 | 18 Kgs/Day , 3.5 Kg storage ICE/WATER, with mains water | \$ 1,200.00 |
| AIM-25-P | 18 Kgs/Day , 3.5 Kg storage ICE/WATER, with Bottled Water Source | \$ 1,200.00 |

* Not normally held in Stock. Special order required. Please ring for details.

Turbo Air SD Display Chillers and Freezers Range

| | | | |
|----------------|-----------------------------------------------|--------------------------------------|-------------|
| TGM-5SD(B)(W) | Turbo Air Premium Display Chiller Single Door | W635 x D590 x H831mm | \$3,050.00 |
| TGM-10SD(B)(W) | Turbo Air Premium Display Chiller Single Door | W655 x D590 x H1380mm | \$3,650.00 |
| TGM-12SD(B)(W) | Turbo Air Premium Display Chiller Single Door | W655 x D590 x H1600mm | \$4,020.00 |
| TGM-15SD(B)(W) | Turbo Air Premium Display Chiller Single Door | W670 x D630 x H1920mm + Castors 159m | \$4,950.00 |
| TGM-20SD(B)(W) | Turbo Air Premium Display Chiller Single Door | W685 x D670 x H1955mm + Castors 159m | \$5,050.00 |
| TGM-23SD(B)(W) | Turbo Air Premium Display Chiller Single Door | W685 x D770 x H1955mm + Castors 159m | \$5,190.00 |
| TGM-35SD(B)(W) | Turbo Air Premium Display Chiller Two Door | W1004 x D809 x H1956mm + Castors 159 | \$6,590.00 |
| TGM-47SD(B)(W) | Turbo Air Premium Display Chiller Two Door | W1299 x D809 x H1956mm + Castors 159 | \$7,400.00 |
| TGM-72SD(B)(W) | Turbo Air Premium Display Chiller Three Door | W1981 x D809 x H1956mm + Castors 159 | \$10,850.00 |
| TGF-5SD(B)(W) | Turbo Air Premium Display Freezer Single Door | W635 x D590 x H831mm | \$4,070.00 |
| TGF-10SD(B)(W) | Turbo Air Premium Display Freezer Single Door | W655 x D590 x H1380mm | \$5,400.00 |
| TGF-15SD(B)(W) | Turbo Air Premium Display Freezer Single Door | W670 x D630 x H1920mm + Castors 159m | \$6,550.00 |
| TGF-23SD(B)(W) | Turbo Air Premium Display Freezer Single Door | W685 x D770 x H1955mm + Castors 159m | \$7,550.00 |
| TGF-35SD(B)(W) | Turbo Air Premium Display Freezer Two Door | W1004 x D809 x H1956mm + Castors 159 | \$10,300.00 |
| TGF-47SD(B)(W) | Turbo Air Premium Display Freezer Two Door | W1299 x D809 x H1956mm + Castors 159 | \$11,150.00 |
| TGF-72SD(B)(W) | Turbo Air Premium Display Freezer Three Door | W1981 x D809 x H1956mm + Castors 159 | \$16,095.00 |

Back Bar and Bottle Coolers

| | | | |
|------------|-----------------------------------------------------|----------------------|------------|
| TB6-8H-SWB | Turbo Air TB6-8H-SWB 1 Door Back Bar Fridge | W600X D543 X H800 mm | \$2,795.00 |
| TB9-8H-SWD | Turbo Air TB9-8H-SWB 2 Door Swing Door Bar Fridge | W900XD542XH800 mm | \$4,550.00 |
| TB9-9H-SLB | Turbo Air TB9-9H-SLB 2 Door Sliding Door Bar Fridge | W900XD542XH900 mm | \$4,550.00 |

Back Bar

| | | | |
|---------|-----------------------|--------------------------------------|------------|
| TBB-2SG | Turbo Air Back Bar 2G | W1492x D692x H945mm Including Castor | \$5,275.00 |
| TBB-3SG | Turbo Air Back Bar 3G | W1753x D692x H945mm Including Castor | \$5,750.00 |
| TBB-4SG | Turbo Air Back Bar 3G | W2296x D692x H945mm Including Castor | \$6,450.00 |

Beer Dispenser

| | | | |
|---------|--------------------------------------|--------------------|------------|
| TBD-1SD | Turbo Air Beer Dispenser single font | W600xD806xH988mm | \$4,250.00 |
| TBD-2SD | Turbo Air Beer Dispenser Double font | W1492xD691xH1065mm | \$5,775.00 |
| TBD-3SD | Turbo Air Beer Dispenser Double font | W1758xD691xH1065mm | \$6,335.00 |
| TBD-4SD | Turbo Air Beer Dispenser Double font | W2296xD691xH1065mm | \$7,195.00 |

Bottle Chiller

| | | | |
|-----------|------------------------------|----------------------------------|------------|
| TBC-24SD | Turbo Air Bottle Cooler 24SD | W632x D775x H972mm (On Castors | \$3,150.00 |
| TBC-36SD | Turbo Air Bottle Cooler 36SD | W1270 x D775x H972mm (On Castors | \$3,515.00 |
| TBC-50SD* | Turbo Air Bottle Cooler 50SD | W934x D775x H972mm (On Castors | \$4,225.00 |

* Not normally held in Stock. Special order required. Please ring for details.

Chef Bases - 815 Depth

| | | | |
|------------|---------------------|--------------------------------------|-------------|
| TCBE-96SDR | Turbo Air Chef Base | W 2449 x D 815 X H 649mm Inc Castors | \$11,950.00 |
| TCBE-82SDR | Turbo Air Chef Base | W 2125 x D 815 X H 649mm Inc Castors | \$9,975.00 |
| TCBE-52SDR | Turbo Air Chef Base | W 1330 x D 815 X H 649mm Inc Castors | \$6,990.00 |

Chef Bases - 700 Depth

| | | | |
|---------|------------------------------|---------------------------|------------|
| KUC12-2 | Turbo Air Chef Base 2 Drawer | W 1200 x D 700 x H 595 mm | \$5,265.00 |
| KUC15-4 | Turbo Air Chef Base 4 Drawer | W 1500 x D 700 x H 595 mm | \$6,275.00 |
| KUC18-4 | Turbo Air Chef Base 4 Drawer | W 1800 x D 700 x H 595 mm | \$6,835.00 |

Pizza Prep Tables

| | | | |
|--------------|------------------------------------------------------|--------------------------------------------|------------|
| CTPR-93SD | Turbo Air Pizza Prep Table 3 Doors Air Over Pans | W 2362x D 820x H 914mm, 1069mm Inc Casters | \$9,100.00 |
| CTPR-67SD | Turbo Air Pizza Prep Table 2 Doors Air Over Pans | W 1702x D 820x H 914mm, 1069mm Inc C | \$7,400.00 |
| CTPR-44SD | Turbo Air Pizza Prep Table 1 Door Air Over Pans | W 1117x D 820x H 914mm, 1069mm Inc C | \$5,700.00 |
| CTPR-67SD-D4 | Turbo Air Pizza Prep Table 4 Drawers Air Over Pans | W 1702x D 820x H 914mm, 1069mm Inc C | \$8,995.00 |
| CTPR-67SD-D2 | Turbo Air Pizza Prep Table 1 Door 2 Drawers Air Over | W 1702x D 820x H 914mm, 1069mm Inc C | \$7,950.00 |
| CTPR-44SD-D2 | Turbo Air Pizza Prep Table 2 Drawers Air Over Pans | W 1117x D 820x H 914mm, 1069mm Inc C | \$6,390.00 |

Open Top Salad Buffet Tables and Salad Prep Tables K Series

| | | | |
|---------|----------------------------------------------|------------------------------------------|------------|
| KSR18-3 | Turbo Air Salad Buffet Table 3 Doors | W1800xD700xH875mm Inc castors | \$5,450.00 |
| KSR15-2 | Turbo Air Salad Buffet Table 2 Doors | W1500xD700xH875mm Inc castors | \$4,510.00 |
| KSR12-2 | Turbo Air Salad Buffet Table 2 Doors | W1200xD700xH875mm Inc castors | \$4,105.00 |
| KSR9-1 | Turbo Air Salad Buffet Table 1 Doors | W900xD700xH875mm Inc castors | \$3,650.00 |
| KHR18-3 | Turbo Air Salad Prep Table 3 Doors Side Unit | W1800xD700xH978mm (1134mm Inc castors) | \$6,200.00 |
| KHR15-2 | Turbo Air Salad Prep Table 2 Doors Side Unit | W1500x D700xH978mm (1134mm Inc castors) | 4,800.00 |
| KHR12-2 | Turbo Air Salad Prep Table 2 Doors Side Unit | W1200x D700xH978mm (1134mm Inc castors) | \$4,350.00 |
| KHR9-1 | Turbo Air Salad Prep Table 1 Doors Side Unit | W900x D700xH978mm (1134mm Inc cast | \$3,650.00 |

Salad Prep Tables M Series

| | | | |
|------------|---------------------------------------|-------------------------------------------------|------------|
| CMST-72-30 | Turbo Air Mega Top Salad Prep 3 Doors | W1846xD863xH992mm inc castors 1134m | \$6,680.00 |
| CMST-60-24 | Turbo Air Mega Top Salad Prep 2 Doors | W1530xD863xH992mm inc castors 1134m | \$5,350.00 |
| CMST-48-18 | Turbo Air Mega Top Salad Prep 2 Doors | W1225xD863xH992mm inc castors 1134m | \$5,185.00 |
| CMST-28-12 | Turbo Air Mega Top Salad Prep 1 Doors | W698xD863xH992mm inc castors 1134m | \$3,360.00 |
| CMST-72 | Turbo Air Salad Prep 3 Doors | W1846xD762xH941mm 1082mm inc casto | \$6,485.00 |
| CMST-60 | Turbo Air Salad Prep 2 Doors | W1530xD762xH941mm, 1082mm inc cast | \$5,050.00 |
| CMST-48 | Turbo Air Salad Prep 2 Doors | W1225xD762xH941mm 1082mm inc casto | \$4,510.00 |
| CMST-28 | Turbo Air Salad Prep 1 Doors | W698xD762xH941mm, 1082mm inc casto ^s | \$3,270.00 |
| CMST-60-D4 | Turbo Air Salad Prep 4 Drawers | W1530xD762xH941mm 1082mm inc casto | \$7,450.00 |
| CMST-60-D2 | Turbo Air Salad Prep 2 Drawers 1 Door | W1530xD762xH941mm 1082mm inc casto | \$7,350.00 |
| CMST-48-D4 | Turbo Air Salad Prep 4 Drawers | W1225xD762xH941mm 1082mm inc casto | \$5,900.00 |
| CMST-28-D2 | Turbo Air Salad Prep 2 Drawers | W698xD762xH941mm 1082mm inc castor | \$4,250.00 |

Under Counter Prep Tables M Series

RRP (exc GST)

| | | | |
|---------|-----------------------------------------------|--------------------------------------|------------|
| CMUR-72 | Turbo Air Modular 3 Door Undercounter Chiller | W1846 x D762 x H903mm (Inc Castors) | \$5,355.00 |
| CMUR-60 | Turbo Air Modular 2 Door Undercounter Chiller | W1530 x D762 x H903mm (Inc Castors) | \$4,290.00 |
| CMUR-48 | Turbo Air Modular 2 Door Undercounter Chiller | W1225 x D762 x H903mm (Inc Castors) | \$3,850.00 |
| CMUR-28 | Turbo Air Modular 1 Door Undercounter Chiller | W698 x D762 x H903mm (Inc Castors) | \$2,775.00 |
| CMUF-60 | Turbo Air Modular 2 Door Undercounter Freezer | W1530 x D762 x H903mm (Inc Castors) | \$4,710.00 |
| CMUF-48 | Turbo Air Modular 2 Door Undercounter Freezer | W1225 x D762 x H903mm (Inc Castors) | \$4,220.00 |
| CMUF-28 | Turbo Air Modular 1 Door Undercounter Freezer | W698 x D762 x H903mm (Inc Castors) | \$2,865.00 |

Under Counter Prep Tables M Series With Drawers

| | | | |
|------------|-----------------------------------------------------------|----------------------------------------|------------|
| CMUF-28-D2 | Turbo Air Modular 1 Door Undercounter Freezer 2 Drawer | W698 x D762 x H903mm (Inc Castors) | \$4,315.00 |
| CMUR-28-D2 | Turbo Air Modular 1 Door Undercounter Chiller 2 Drawer | W698 x D762 x H903mm (Inc Castors) | \$3,835.00 |
| CMUR-48-D4 | Turbo Air Modular Undercounter Chiller 4 Drawers | W1225 x D762 x H903mm (Including Cast | \$6,375.00 |

Under Counter Prep Tables M Series With Glass Doors

| | | | |
|----------|-----------------------------------------------------|-------------------------------------|------------|
| CMUR-28G | Turbo Air Modular 1 Glass Door Undercounter Chiller | W698 x D762 x H903mm (Inc Castors) | \$3,550.00 |
|----------|-----------------------------------------------------|-------------------------------------|------------|

Upright Foodservice Chillers and Freezers M Series

| | | | |
|----------|-------------------------------------------------------|-----------------------------------|-------------|
| CM3R72-3 | Turbo Air 3 Door Top Mount Foodservice Chiller | W1976xD830 xH2106mm inc castors | \$9,050.00 |
| CM3R72-6 | Turbo Air 6 x Half Door Top Mount Foodservice Chiller | W1976xD830 xH2106mm inc castors | \$9,500.00 |
| CM3R47-2 | Turbo Air 2 Door Top Mount Foodservice Chiller | W1314 x D830 xH2106mm inc castors | \$5,850.00 |
| CM3R47-4 | Turbo Air 4 x Half Door Top Mount Foodservice Chiller | W1314 x D830 xH2106mm inc castors | \$6,150.00 |
| CM3R24-1 | Turbo Air 1 Door Top Mount Foodservice Chiller | W730 xD830 xH2106mm inc castors | \$3,850.00 |
| CM3R24-2 | Turbo Air 2 x half Door Top Mount Foodservice Chiller | W730 xD830 xH2106mm inc castors | \$3,955.00 |
| CM3F72-3 | Turbo Air 3 Door Top Mount Foodservice Freezer | W1976xD830 xH2106mm inc castors | \$10,805.00 |
| CM3F72-6 | Turbo Air 6 x Half Door Top Mount Foodservice Freezer | W1976xD830 xH2106mm inc castors | \$11,400.00 |
| CM3F47-2 | Turbo Air 2 Door Top Mount Foodservice Freezer | W1314 x D830 xH2106mm inc castors | \$7,100.00 |
| CM3F47-4 | Turbo Air 4 x Half Door Top Mount Foodservice Freezer | W1314 x D830 xH2106mm inc castors | \$7,455.00 |
| CM3F24-1 | Turbo Air 1 Door Top Mount Foodservice Freezer | W730 xD830 xH2106mm inc castors | \$4,755.00 |
| CM3F24-2 | Turbo Air 3 Door Top Mount Foodservice Freezer | W730 xD830 xH2106mm inc castors | \$4,910.00 |

Upright Foodservice Chillers and Freezers M Series Bottom Mount

| | | | |
|-----------|---------------------------------------------------|--------------------------------|-------------|
| CTSR-72SD | Turbo Air 3 Door Bottom Mount Foodservice Chiller | W2079xD770xH2113mm inc castors | \$9,680.00 |
| CTSR-49SD | Turbo Air 2 Door Bottom Mount Foodservice Chiller | W1382xD770xH2113mm inc castors | \$6,455.00 |
| CTSR-35SD | Turbo Air 2 Door Bottom Mount Foodservice Chiller | W1003xD770xH2113mm inc castors | \$6,200.00 |
| CTSR-23SD | Turbo Air 1 Door Bottom Mount Foodservice Chiller | W685xD770xH2113mm inc castors | \$4,250.00 |
| CTSF-72SD | Turbo Air 3 Door Bottom Mount Foodservice Freezer | W2079xD770xH2113mm inc castors | \$11,850.00 |
| CTSF-49SD | Turbo Air 2 Door Bottom Mount Foodservice Freezer | W1382xD770xH2113mm inc castors | \$7,960.00 |
| CTSF-35SD | Turbo Air 2 Door Bottom Mount Foodservice Freezer | W1003xD770xH2113mm inc castors | \$7,050.00 |
| CTSF-23SD | Turbo Air 1 Door Bottom Mount Foodservice Freezer | W685xD770xH2113mm inc castors | \$5,275.00 |

Slim Line Bottom Mount Food Service Chillers and Freezers

| | | | |
|----------|------------------------------------------|----------------------------------|------------|
| FD-650R | Turbo Air Premier Solid One Door Chiller | W 686x D770x H2103mm Inc castors | \$4,400.00 |
| FD-1250R | Turbo Air Premier Solid Two Door Chiller | W 1382x D770x H2103mm Including | \$6,800.00 |
| FD-650F | Turbo Air Premier Solid Door Freezer | W 686x D770x H2103mm Inc castors | \$5,100.00 |
| FD-1250F | Turbo Air Premier Solid Two Door Freezer | W 1382x D770x H2103mm Including | \$8,100.00 |

Slim Line Bottom Mount Food Service Chillers Glass Doors

| | | | |
|------------|--------------------------------------------|----------------------------------|------------|
| FD-650R-G1 | Turbo Air 1 Door Display Chiller 650L s/s | W 686x D770x H2103mm Inc castors | \$4,105.00 |
| FD-1250R- | Turbo Air 2 Door Display Chiller 1250L s/s | W 1382x D770x H2103mm Including | \$6,075.00 |

Upright Foodservice Chillers and Freezers K Series S/Steel Doors

| | | | |
|--------|-------------------------------------------------------|-----------------------------------|------------|
| KR65-6 | Turbo Air 6 x Half Door Top Mount Foodservice Chiller | W 1900x D850x H1926mm inc castors | \$7,750.00 |
| KR65-3 | Turbo Air 3 Door Top Mount Foodservice Chiller | W 1900x D850x H1926mm inc castors | \$7,470.00 |
| KR45-4 | Turbo Air 4 x Half Door Top Mount Foodservice Chiller | W 1260x D850x H1926mm inc castors | \$5,035.00 |
| KR45-2 | Turbo Air 2 Door Top Mount Foodservice Chiller | W 1260x D850x H1926mm inc castors | \$4,905.00 |
| KR25-2 | Turbo Air 2 x half Door Top Mount Foodservice Chiller | W 640 x D850 x H1926mm inc castor | \$3,735.00 |
| KR25-1 | Turbo Air 1 Door Top Mount Foodservice Chiller | W 640 x D850 x H1926mm inc castor | \$3,595.00 |
| KF65-6 | Turbo Air 6 x Half Door Top Mount Foodservice Freezer | W 1900x D850x H1926mm inc castors | \$9,405.00 |
| KF65-3 | Turbo Air 3 Door Top Mount Foodservice Freezer | W 1900x D850x H1926mm inc castors | \$9,090.00 |
| KF45-4 | Turbo Air 4 x Half Door Top Mount Foodservice Freezer | W 1260x D850x H1926mm inc castors | \$6,550.00 |
| KF45-2 | Turbo Air 2 Door Top Mount Foodservice Freezer | W 1260x D850x H1926mm inc castors | \$6,295.00 |
| KF25-2 | Turbo Air 2 x half Door Top Mount Foodservice Freezer | W 640 x D850 x H1926mm inc castor | \$4,125.00 |
| KF25-1 | Turbo Air 1 Door Top Mount Foodservice Freezer | W 640 x D850 x H1926mm inc castor | \$4,050.00 |

Upright Foodservice Dual Temp Chillers and Freezers K Series

RRP (exc GST)

| | | | |
|----------|-------------------------------------------------------------|-----------------------------------|-------------|
| KRF65-6 | Turbo Air 6 half Door Top Mount Dual Temp Chiller / Freezer | W 1900x D850x H1926mm inc castors | \$10,130.00 |
| KRF65-3 | Turbo Air 3 Door Top Mount Dual Temp Chiller / Freezer | W 1900x D850x H1926mm inc castors | \$8,815.00 |
| KRF45-2 | Turbo Air 2 Door Top Mount Dual Temp Chiller / Freezer | W 1260x D850x H1926mm inc castors | \$7,135.00 |
| KRF45-4H | Turbo Air 4 half Door Top Mount Dual Temp Chiller / | W 1260x D850x H1926mm inc castors | \$7,650.00 |
| KRF25-2 | Turbo Air 2 half Door Top Mount Dual Temp Chiller / Freezer | W 640 x D850 x H1926mm inc castor | \$5,090.00 |

Upright Foodservice Display Chillers and Freezers K Series S/Steel with Glass Doors

| | | | |
|---------|---------------------------------------------------------|-----------------------------------|------------|
| KR65-6G | Turbo Air 6 x Half Glass Door Top Mount Display Chiller | W 1900x D850x H1926mm inc castors | \$9,795.00 |
| KR65-3G | Turbo Air 3 Glass Door Top Mount Display Chiller | W 1900x D850x H1926mm inc castors | \$8,795.00 |
| KR45-4G | Turbo Air 4 x Half Glass Door Top Mount Display Chiller | W 1260x D850x H1926mm inc castors | \$6,655.00 |
| KR45-2G | Turbo Air 2 Glass Door Top Mount Display Chiller | W 1260x D850x H1926mm inc castors | \$6,075.00 |
| KR25-2G | Turbo Air 2 x Half Glass Door Top Mount Display Chiller | W 640 x D850 x H1926mm inc castor | \$4,535.00 |
| KR25-1G | Turbo Air 1 Glass Door Top Mount Display Chiller | W 640x D850 x H1926mm inc castors | \$4,215.00 |
| KF45-4G | Turbo Air 4 x Half Glass Door Top Mount Display Freezer | W 1260x D850x H1926mm inc castors | \$9,225.00 |
| KF45-2G | Turbo Air 2 Glass Door Top Mount Display Freezer | W 1260x D850x H1926mm inc castors | \$8,665.00 |
| KF25-2G | Turbo Air 2 x Half Glass Door Top Mount Display Freezer | W 640 x D850 x H1926mm inc castor | \$5,495.00 |
| KF25-1G | Turbo Air 1 Glass Door Top Mount Display Freezer | W 640x D850 x H1926mm inc castors | \$5,095.00 |

Upright Foodservice Display Chillers and Freezers F Series Colorbond with Glass Doors (Swing and Sliding Doors)

| | | | |
|---------------------|---------------------------------------------|------------------------------------------------|------------|
| FS-120F | Turbo Air Counter Top Freezer | W 605x D 506x H 890mm | \$2,300.00 |
| FRS-650F | Turbo Air Single Door Display Freezer 650L | W685x D760x H1984mm (H2114mm on Cas- | \$4,850.00 |
| FRS-1250F | Turbo Air Two Door Display Freezer 1250L | W1382x D760x H1984mm (H2114mm on Cas- tors) | \$7,950.00 |
| FRS-145R | Turbo Air Countertop 117L Display Fridge | W 486x D 589x H 879mm | \$885.00 |
| FRS-300RP | Turbo Air upright 300L Display Fridge | W600x D586x H1610mm | \$1,585.00 |
| FRS-401RNP | Turbo Air Upright Display Fridge 400L | W600x D586x H1877mm | \$1,650.00 |
| FRS-600RP (G1R-600) | Turbo Air 1 Door Display Chiller 600L | W 770x D 730x H 2031mm | \$2,200.00 |
| FRS-1000R | Turbo Air upright Chiller two Sliding Doors | W1055x D745x H2018mm | \$3,850.00 |
| FRS-1300R | Turbo Air upright Chiller two Sliding Doors | W1420x D745x H2018mm | \$4,050.00 |

RRP (exc
GST)

Glass Door Undercounter Chillers K Series 700MM Depth

| | | | |
|-------------|----------------------------------------------------------|-----------------------------------|------------|
| KGR18-3 | Turbo Air Undercounter 3 Door Glass Door Fridge | W 1800 x D700 x H850mm on Castors | \$5,455.00 |
| KGR15-2 | Turbo Air Undercounter 2 Door Glass Door Fridge | W 1500 x D700 x H850mm on Castors | \$4,550.00 |
| KGR12-2 | Turbo Air Undercounter 2 Door Glass Door Fridge | W 1200 x D700 x H850mm on Castors | \$4,350.00 |
| KGR9-1 | Turbo Air Undercounter 1 Door Glass Door Fridge | W 900 x D700 x H850mm on Castors | \$3,245.00 |
| KGR12-2(RC) | Turbo Air Undercounter 2 Door Glass Door Fridge Right | W 1200 x D700 x H850mm on Castors | \$4,350.00 |

Glass Door Undercounter Chillers K Series 600MM Depth

| | | | |
|--------------|-------------------------------------------------|-----------------------------------|------------|
| KGR18-3(600) | Turbo Air Undercounter 3 Door Glass Door Fridge | W 1800 x D600 x H850mm on Castors | \$5,455.00 |
| KGR15-2(600) | Turbo Air Undercounter 2 Door Glass Door Fridge | W 1500 x D600 x H850mm on Castors | \$4,550.00 |
| KGR12-2(600) | Turbo Air Undercounter 2 Door Glass Door Fridge | W 1200 x D600 x H850mm on Castors | \$4,350.00 |
| KGR9-1(600) | Turbo Air Undercounter 1 Door Glass Door Fridge | W 900 x D600 x H850mm on Castors | \$3,245.00 |

RRP (exc
GST)

Undercounter Chillers and Freezers K Series 700MM depth

| | | | |
|---------|---------------------------------------|-----------------------------------|------------|
| KUR18-3 | Turbo Air Undercounter 3 Door Chiller | W 1800 x D700 x H850mm on Castors | \$4,200.00 |
| KUR15-2 | Turbo Air Undercounter 2 Door Chiller | W 1500 x D700 x H850mm on Castors | \$3,900.00 |
| KUR12-2 | Turbo Air Undercounter 2 Door Chiller | W 1200 x D700 x H850mm on Castors | \$3,415.00 |
| KUR9-1 | Turbo Air Undercounter 1 Door Chiller | W 900 x D700 x H850mm on Castors | \$3,115.00 |
| KUF18-3 | Turbo Air Undercounter 3 Door Freezer | W 1800 x D700 x H850mm on Castors | \$4,800.00 |
| KUF15-2 | Turbo Air Undercounter 2 Door Freezer | W 1500 x D700 x H850mm on Castors | \$4,100.00 |
| KUF12-2 | Turbo Air Undercounter 2 Door Freezer | W 1200 x D700 x H850mm on Castors | \$3,710.00 |
| KUF9-1 | Turbo Air Undercounter 1 Door Freezer | W 900 x D700 x H850mm on Castors | \$3,375.00 |

RRP (exc
GST)

Undercounter Chillers and Freezers K Series 600MM depth

| | | | |
|--------------|---------------------------------------|-----------------------------------|------------|
| KUR18-3(600) | Turbo Air Undercounter 3 Door Chiller | W 1800 x D600 x H850mm on Castors | \$4,200.00 |
| KUR15-2(600) | Turbo Air Undercounter 2 Door Chiller | W 1500 x D600 x H850mm on Castors | \$3,900.00 |
| KUR12-2(600) | Turbo Air Undercounter 2 Door Chiller | W 1200 x D600 x H850mm on Castors | \$3,415.00 |
| KUR9-1(600) | Turbo Air Undercounter 1 Door Chiller | W 900 x D600 x H850mm on Castors | \$3,115.00 |
| KUF18-3(600) | Turbo Air Undercounter 3 Door Freezer | W 1800 x D600 x H850mm on Castors | \$4,800.00 |
| KUF15-2(600) | Turbo Air Undercounter 2 Door Freezer | W 1500 x D600 x H850mm on Castors | \$4,100.00 |
| KUF12-2(600) | Turbo Air Undercounter 2 Door Freezer | W 1200 x D600 x H850mm on Castors | \$3,710.00 |
| KUF9-1(600) | Turbo Air Undercounter 1 Door Freezer | W 900 x D600 x H850mm on Castors | \$3,375.00 |

Dual Temp Undercounter Chillers and Freezers K Series

| | | | |
|----------|---------------------------------------------------|-----------------------------------|-------------|
| KURF12-2 | Turbo Air Undercounter Dual Temp Chiller/ Freezer | W 1800 x D700 x H850mm on Castors | \$ 5,000.00 |
| KURF15-2 | Turbo Air Undercounter Dual Temp Chiller/ Freezer | W 1500 x D700 x H850mm on Castors | \$ 5,200.00 |
| KURF18-3 | Turbo Air Undercounter Dual Temp Chiller/ Freezer | W 1200 x D700 x H850mm on Castors | \$ 5,400.00 |

Undercounter Chillers and Freezers with Drawers K Series (3 Drawers per section)

| | | | |
|------------|------------------------------------------------|-----------------------------------|-------------|
| KUR18-3D-9 | Turbo Air Undercounter 9 Drawer Chiller | W 1800 x D700 x H850mm on Castors | \$ 7,990.00 |
| KUR18-3D-6 | Turbo Air Undercounter 1 Door 6 Drawer Chiller | W 1800 x D700 x H850mm on Castors | \$ 6,895.00 |
| KUR18-3D-3 | Turbo Air Undercounter 2 Door 3 Drawer Chiller | W 1800 x D700 x H850mm on Castors | \$ 5,875.00 |
| KUR15-3D-6 | Turbo Air Undercounter 6 Drawer Chiller | W 1500 x D700 x H850mm on Castors | \$ 6,477.00 |
| KUR15-3D-3 | Turbo Air Undercounter 1 Door 3 Drawer Chiller | W 1500 x D700 x H850mm on Castors | \$ 5,450.00 |
| KUR12-3D-6 | Turbo Air Undercounter 6 Drawer Chiller | W 1200 x D700 x H850mm on Castors | \$ 6,150.00 |
| KUR12-3D-3 | Turbo Air Undercounter 1 Door 3 Drawer Chiller | W 1200 x D700 x H850mm on Castors | \$ 5,050.00 |
| KUR9-3D-3 | Turbo Air Undercounter 3 Drawer Chiller | W 900 x D700 x H850mm on Castors | \$ 4,785.00 |
| KUF15-3D-6 | Turbo Air Undercounter 6 Drawer Freezer | W 1500 x D700 x H850mm on Castors | \$ 6,750.00 |
| KUF15-3D-3 | Turbo Air Undercounter 1 Door 3 Drawer Freezer | W 1500 x D700 x H850mm on Castors | \$ 5,790.00 |
| KUF12-3D-6 | Turbo Air Undercounter 6 Drawer Freezer | W 1200 x D700 x H850mm on Castors | \$ 6,450.00 |
| KUF12-3D-3 | Turbo Air Undercounter 1 Door 3 Drawer Freezer | W 1200 x D700 x H850mm on Castors | \$ 5,250.00 |
| KUF9-3D-3 | Turbo Air Undercounter 3 Drawer Freezer | W 900 x D700 x H850mm on Castors | \$ 4,950.00 |

Undercounter Chillers and Freezers with Drawers K Series (2 Drawers per section)

| | | | RRP (exc GST) |
|------------|------------------------------------------------|-----------------------------------|---------------|
| KUR18-2D-6 | Turbo Air Undercounter 6 Drawer Chiller | W 1800 x D700 x H850mm on Castors | \$ 6,990.00 |
| KUR18-2D-4 | Turbo Air Undercounter 1 Door 4 Drawer Chiller | W 1800 x D700 x H850mm on Castors | \$ 6,350.00 |
| KUR18-2D-2 | Turbo Air Undercounter 2 Door 2 Drawer Chiller | W 1800 x D700 x H850mm on Castors | \$ 5,550.00 |
| KUR15-2D-4 | Turbo Air Undercounter 4 Drawer Chiller | W 1500 x D700 x H850mm on Castors | \$ 5,775.00 |
| KUR15-2D-2 | Turbo Air Undercounter 1 Door 2 Drawer Chiller | W 1500 x D700 x H850mm on Castors | \$ 5,535.00 |
| KUR12-2D-4 | Turbo Air Undercounter 4 Drawer Chiller | W 1200 x D700 x H850mm on Castors | \$ 5,150.00 |
| KUR12-2D-2 | Turbo Air Undercounter 1 Door 2 Drawer Chiller | W 1200 x D700 x H850mm on Castors | \$ 4,550.00 |
| KUR9-2D-2 | Turbo Air Undercounter 2 Drawer Chiller | W 900 x D700 x H850mm on Castors | \$ 4,350.00 |
| KUF15-2D-4 | Turbo Air Undercounter 4 Drawer Freezer | W 1500 x D700 x H850mm on Castors | \$ 6,150.00 |
| KUF15-2D-2 | Turbo Air Undercounter 1 Door 2 Drawer Freezer | W 1500 x D700 x H850mm on Castors | \$ 5,750.00 |
| KUF12-2D-4 | Turbo Air Undercounter 4 Drawer Freezer | W 1200 x D700 x H850mm on Castors | \$ 5,885.00 |
| KUF12-2D-2 | Turbo Air Undercounter 1 Door 2 Drawer Freezer | W 1200 x D700 x H850mm on Castors | \$ 5,175.00 |
| KUF9-2D-2 | Turbo Air Undercounter 2 Drawer Freezer | W 900 x D700 x H850mm on Castors | \$ 4,685.00 |

Upright Foodservice Chillers Pro Series S/Steel Doors Pass Thru

| | | | RRP (exc GST) |
|-----------|---------------------------------------------------|-----------------------------------|---------------|
| PRO-50RPT | Turbo Air Top Mount Foodservice Pass Thru Chiller | W 1314 x D 930 x H2132 on Castors | \$ 9,500.00 |

Turbo Air Chest Freezer

| | | | |
|---------|-------------------------------------------------|----------------------------------|-------------|
| CH-580L | Turbo Air Chest freezer 580L Sliding Glass lids | W1457 x D820 x H852mm on Castors | \$ 2,760.00 |
| CH-720L | Turbo Air Chest freezer 720L Sliding Glass lids | W1750x D820x H852mm | \$ 3,630.00 |



1800 813 987

**Austune A Series Undercounter Chillers**

RRP (exc GST)

| | | | |
|---------|--------------------------------|---------------------|-------------|
| AUR12-2 | Austune A Undercounter Chiller | W1200x D700x H865mm | \$ 3,145.25 |
| AUR15-2 | Austune A Undercounter Chiller | W1500x D700x H865mm | \$ 3,651.25 |
| AUR18-3 | Austune A Undercounter Chiller | W1800x D700x H865mm | \$ 4,019.25 |
| AUF12-2 | Austune A Undercounter Freezer | W1200x D700x H865mm | \$ 3,444.25 |

Austune A Series Pizza Counters

| | | | |
|--------|----------------------------------|-----------------------------------------------|-------------|
| APT-93 | Austune A Pizza Prep Counter | W2362xD820xH914mm, 1069mm Includin Casters | \$ 9,033.25 |
| APT-67 | Austune A Series Pizza Fridge 67 | W1702xD820xH914mm | \$ 6,756.25 |
| APT-44 | Austune A Series Pizza Fridge 44 | W1117xD820xH914mm | \$ 4,927.75 |

Austune A Series Compact Back Bar Black Finish Hinge and Sliding Doors

| | | | |
|------------|------------------------------------------|-----------------------|-------------|
| BB-1(840) | Austune Backbar Hinge Door BB-1 840mm | W600x D520x H840 mm | \$ 1,523.75 |
| BB-2(840) | Austune Backbar Hinge Door BB-2 840mm | W900x D520x H840 mm | \$ 1,811.25 |
| BB-2S(840) | Austune Backbar Sliding Door BB-2S 840mm | W900x D520x H840 mm | \$ 1,891.75 |
| BB-3(840) | Austune Backbar Hinge Door BB-3 840mm | W 1350x D520x H840 mm | \$ 2,363.25 |
| BB-3S(840) | Austune Backbar Sliding Door BB-3S 840mm | W1350x D520x H840 mm | \$ 2,443.75 |
| BB-1(900) | Austune Backbar Hinge Door BB-1 900mm | W 600x D520x H900 mm | \$ 1,523.75 |
| BB-2(900) | Austune Backbar Hinge Door BB-2 900mm | W 900 x D520x H900 mm | \$ 1,811.25 |
| BB-2S(900) | Austune Backbar Sliding Door BB-2S 900mm | W 900 x D520x H900 mm | \$ 1,891.75 |
| BB-3(900) | Austune Backbar Hinge Door BB-3 900mm | W 1350x D520x H900 mm | \$ 2,363.25 |
| BB-3S(900) | Austune Backbar Sliding Door BB-3S 900mm | W 1350x D520x H900 mm | \$ 2,443.75 |

Austune A Series Compact Back Bar Stainless Finish Hinge Door

| | | | |
|-----------|------------------------------------------|-----------------------|-------------|
| BS-2(840) | Austune Backbar Hinge Door BB-2 840mm | W900x D520x H840 mm | \$ 2,041.25 |
| BS-3(840) | Austune Backbar Hinge Door BB-2 840mm | W900x D520x H840 mm | \$ 2,593.25 |
| BS-2(900) | Austune Backbar Hinge Door BB-2 900mm | W 900 x D520x H900 mm | \$ 2,041.25 |
| BS-3(900) | Austune Backbar Sliding Door BB-2S 840mm | W900x D520x H840 mm | \$ 2,593.25 |

Austune KK Series Cake Displays

| | | | |
|--------|-------------------------------------------------------|------------------------|--------------|
| K630V | AUSTUNE KK CAKE DISPLAY 900 K630V 2 Shelf Plus Base | W 900* D 680* H1200 | \$ 5,692.50 |
| K640V | AUSTUNE KK CAKE DISPLAY 1200 K640V 2 Shelf Plus Base | W 1200* D 680* H 1200 | \$ 6,273.25 |
| K650V | AUSTUNE KK CAKE DISPLAY 1500 K650V 2 Shelf Plus Base | W 1500 X D 680X H 1200 | \$ 7,394.50 |
| K660V | AUSTUNE KK CAKE DISPLAY 1800 K660V 2 Shelf Plus Base | W 1800* D 680* H 1200 | \$ 7,860.25 |
| K680V | AUSTUNE KK CAKE DISPLAY 2400 K680V 2 Shelf Plus Base | W 2400*D 680* H1200 | \$ 9,516.25 |
| KG630V | AUSTUNE KK CAKE DISPLAY 900 KG630V 3 Shelf Plus Base | W 900*D 680* H 1350 | \$ 6,175.50 |
| KG640V | AUSTUNE KK CAKE DISPLAY 1200 KG640V 3 Shelf Plus Base | W 1200*D 680* H 1350 | \$ 6,894.25 |
| KG650V | AUSTUNE KK CAKE DISPLAY 1500 KG650V 3 Shelf Plus Base | W 1500*D 680* H 1350 | \$ 7,952.25 |
| KG660V | AUSTUNE KK CAKE DISPLAY 1800 KG660V 3 Shelf Plus Base | W 1800*D 680* H 1350 | \$ 8,642.25 |
| KG680V | AUSTUNE KK CAKE DISPLAY 2400 KG680V 3 Shelf Plus Base | W 2400*D 680* H 1350 | \$ 10,459.25 |



1800 813 987



Austune Premium Cake Display Stainless Finish Made in Italy

| | | | |
|------------|----------------------------------------------|--------------------|--------------|
| ACD-900R3 | Austune Cake Display 900mm 3 Tier Plus base | W900*D785*H1400mm | \$ 8,625.00 |
| ACD-1200R3 | Austune Cake Display 1200mm 3 Tier Plus base | W1200*D785*H1400mm | \$ 10,522.50 |
| ACD-1500R3 | Austune Cake Display 1500mm 3 Tier Plus base | W1500*D785*H1400mm | \$ 11,385.00 |
| ACD-1800R3 | Austune Cake Display 1800mm 3 Tier Plus base | W1800*D785*H1400mm | \$ 14,202.50 |

Austune Premium Reach In Multi Deck Display Chiller Self Contained Made In Italy

| | | | |
|------------|---------------------------------------------------|------------------------|--------------|
| AMV80-1080 | Austune Multi Deck S/S interior Night Blind W1080 | W 1080 x D 764 X H2037 | \$ 11,327.50 |
| AMV80-1580 | Austune Multi Deck S/S interior Night Blind W1580 | W 1580 x D 764 X H2038 | \$ 13,673.50 |
| AMV80-2080 | Austune Multi Deck S/S interior Night Blind W2080 | W 2080 x D 764 X H2039 | \$ 16,962.50 |
| AMV80-2580 | Austune Multi Deck S/S interior Night Blind W2580 | W 2580 x D 764 X H2040 | \$ 18,975.00 |

Austune Turbo Air TOM Range Reach In Multi Deck Display Chiller

| | | | |
|----------|------------------------------------------------|---------------------|--------------|
| TOM-40MB | Austune Turbo Air Open Multideck Display H1538 | W991x D711x H1538mm | \$ 11,482.75 |
|----------|------------------------------------------------|---------------------|--------------|

Austune A Series MINI Mart and Convenience Range NEW RANGE SPECIAL ORDER LEAD TIMES APPLY

| | | | |
|------------|------------------------------------------|---------------------------|--------------|
| AGR1000-BA | AUSTUNE BOTTOM MOUNT 2 DOOR SHOWCASE | W1253xD710xH1997mm | \$ 5,502.75 |
| AGR1600-BA | AUSTUNE BOTTOM MOUNT 3 DOOR SHOWCASE | W1880xD710xH1997mm | \$ 7,515.25 |
| AGR2200-BA | AUSTUNE BOTTOM MOUNT 4 DOOR SHOWCASE | W2500xD710xH1997mm | \$ 10,792.75 |
| AGF930-B | AUSTUNE BOTTOM MOUNT 2 DOOR DISP FREEZER | W1253xD760xH1997mm | \$ 11,126.25 |
| AGF1600-B | AUSTUNE BOTTOM MOUNT 3 DOOR DISP FREEZER | W1880xD760xH1997mm | \$ 14,116.25 |
| AGF2200-B | AUSTUNE BOTTOM MOUNT 4 DOOR DISP FREEZER | W2200xD760xH1997mm | \$ 18,808.25 |
| AGR1000-TA | AUSTUNE TOP MOUNT 2 DOOR SHOWCASE | W1253xD710xH2090mm | \$ 5,169.25 |
| AGR1600-TA | AUSTUNE TOP MOUNT 3 DOOR SHOWCASE | W1880xD710xH2090mm | \$ 6,951.75 |
| AGR2200-TA | AUSTUNE TOP MOUNT 4 DOOR SHOWCASE | W2500xD710xH2090mm | \$ 9,619.75 |
| AGF930-T | AUSTUNE TOP MOUNT 2 DOOR DISP FREEZER | W1253xD760xH2090mm | \$ 11,126.25 |
| AGF1600-T | AUSTUNE TOP MOUNT 3 DOOR DISP FREEZER | W1880xD760xH2090mm | \$ 14,139.25 |
| AGF2200-T | AUSTUNE TOP MOUNT 4 DOOR DISP FREEZER | W2200xD760xH2090mm | \$ 18,808.25 |
| AGRR140-A | AUSTUNE REMOTE 2 DOOR SHOWCASE CHILLER | W1366xD750x(H1990+165)mm | \$ 4,950.75 |
| AGRR210-A | AUSTUNE REMOTE 3 DOOR SHOWCASE CHILLER | W2050xD750xH(1990+165)mm | \$ 6,756.25 |
| AGRR280-A | AUSTUNE REMOTE 4 DOOR SHOWCASE CHILLER | W2734xD750x(H1990+165)mm | \$ 9,711.75 |
| AGRR340-A | AUSTUNE REMOTE 5 DOOR SHOWCASE CHILLER | W3418xD750xH(1990+165)mm | \$ 14,564.75 |
| AGFR140-A | AUSTUNE REMOTE 2 DOOR SHOWCASE FREEZER | W1366xD750x(H1990+165)mm | \$ 10,010.75 |
| AGFR210-A | AUSTUNE REMOTE 3 DOOR SHOWCASE FREEZER | W 2050xD750x(H1990+165)mm | \$ 12,701.75 |
| AGFR280-A | AUSTUNE REMOTE 4 DOOR SHOWCASE FREEZER | W2734xd750x(H1990+165)mm | \$ 16,922.25 |
| AGFR340-A | AUSTUNE REMOTE 5 DOOR SHOWCASE FREEZER | W3418x D750x(H1990+165)mm | \$ 1,384.25 |



1800 813 987



EKA Ovens Made In Italy

| | | | |
|--------------|------------------------------------------------------------|------------------------|--------------|
| EKF 412 AL U | Austune EKA Electric Convection oven with humidification | W 460 X D512 X H462 | \$ 2,472.50 |
| EKF423P | Austune EKA Electric Convection oven | W 590 x D695 x H590mm | \$ 1,897.50 |
| EKF423M | Austune EKA Convection Oven With Grill | W 590 x D695 x H590mm | \$ 2,415.00 |
| EKF423DUD | Austune EKA Electric digital Convection oven with Steam | W 590 x D695 x H590mm | \$ 3,277.50 |
| EKF411DALUD | Austune EKA Electric digital Convection oven with Steam | W790 x D785 x H635mm | \$ 5,922.50 |
| EKF416UD | Austune EKA Electric Combi oven with steam manual Control | W790 x D750 x H635mm | \$ 5,002.50 |
| EKF464DUD | Austune EKA Electric Combi oven with steam digital Control | W790 x D750 x H635mm | \$ 5,347.50 |
| EKF664UD | Austune EKA Electric Convection Oven With Steam manual | W935 x D930 x H825mm | \$ 9,487.50 |
| EKF664TC | Austune EKA Electronic Convection Oven with Touch Control | W935 x D930 x H825mm | \$ 12,822.50 |
| EKF611CTC | Austune EKA Compact Combi Oven with Touch Control | W500 X D892 X H679 | \$ 11,770.25 |
| EKF711UD | Austune EKA Combi Oven Manual Control | W935 x D930 x H825mm | \$ 9,602.50 |
| EKF1011CTC | Austune EKA Compact Combi Oven with Touch Control | W500 X D892 X H950 | \$ 16,094.25 |
| EKF1064TC | Austune EKA Combi Oven with Touch Control | W935 X D930 X H1150 | \$ 17,968.75 |
| EKF1111UD | Austune EKA Electric Combi Oven with Manual Control | W935 x D930 x H1150mm | \$ 13,225.00 |
| EKF1111TC | Austune EKA Combi Oven Touch Control | W935 x D930 x H1150mm | \$ 18,112.50 |
| EKF2011TC | Austune EKA Combi Oven Trolley 20 trays Touch Control | W985 x D1030 x H1920mm | \$ 32,539.25 |

EKA Proofers

| | | | |
|---------|------------------------------|-----------------------|-------------|
| EKL823 | PROOFER 8 SNACK TRAYS | W 595 x D 545 X H 840 | \$ 1,926.25 |
| EKL864 | PROOFER 8 x 600 x 400 | W 795 x D 655 X H 835 | \$ 3,737.50 |
| EKL864R | PROOFER 8 TRAYS WITH CASTORS | W 795 x D 655 X H 835 | \$ 3,967.50 |

ATOSA SOLID DOOR UPRIGHT REFRIGERATOR & FREEZERS, 2105mm High (p2)

| | | | |
|---------|-------------------------------------|------------------------|-------------|
| MBF8004 | 1 Solid Door Refrigerator, 670L | W730 x D845 x H2105mm | \$ 3,769.00 |
| MBF8001 | 1 Solid Door Freezer , 670L | W730 x D845 x H2105mm | \$ 4,231.00 |
| MBF8005 | 2 Solid Door Refrigerator, 1300L | W1314 x D845 x H2105mm | \$ 5,219.00 |
| MBF8002 | 2 Solid Door Freezer , 1300L | W1314 x D845 x H2105mm | \$ 5,736.50 |
| MBF8006 | 3 Solid Door Refrigerator, 1968L | W2030 x D845 x H2105mm | \$ 7,306.00 |
| MBF8003 | 3 Solid Door Freezer , 1968L | W2030 x D845 x H2105mm | \$ 8,474.75 |

ATOSA SOLID DOOR UPRIGHT REFRIGERATOR & FREEZERS, 1950mm High(p6)

| | | | |
|---------|------------------------------------|------------------------|-------------|
| YBF9206 | 1 Solid Door Refrigerator, 410L | W600 x D745 x H1950mm | \$ 3,019.00 |
| YBF9207 | 1 Solid Door Freezer , 410L | W600 x D745 x H1950mm | \$ 3,524.00 |
| YBF9218 | 2 Solid Door Refrigerator, 900L | W1200 x D745 x H1950mm | \$ 4,499.00 |
| YBF9219 | 2 Solid Door Freezer , 900L | W1200 x D745 x H1950mm | \$ 5,019.50 |

ATOSA SOLID DOOR DUAL TEMPERATURE, 1950mm High (p9)

| | | | |
|---------|-------------------------------------|------------------------|-------------|
| YBF9239 | 2 Solid Door Dual-Temperature, 855L | W1200 x D745 x H1950mm | \$ 6,599.00 |
|---------|-------------------------------------|------------------------|-------------|

ATOSA GLASS DOOR UPRIGHT REFRIGERATOR & FREEZERS (p10)

| | | | |
|---------|------------------------------------|------------------------|-------------|
| YCF9401 | 1 Glass Door Refrigerator, 410L | W600 x D787 x H1950mm | \$ 3,094.00 |
| YCF9407 | 1 Glass Door Freezer , 410L | W600 x D787 x H1950mm | \$ 4,856.00 |
| YCF9402 | 2 Glass Door Refrigerator, 900L | W1200 x D787 x H1950mm | \$ 4,019.00 |
| YCF9408 | 2 Glass Door Freezer , 900L | W1200 x D787 x H1950mm | \$ 6,461.00 |

ATOSA GLASS DOOR UPRIGHT REFRIGERATOR & FREEZERS (p12)

| | | | |
|---------|-------------------------------------|------------------------|-------------|
| MCF8604 | 1 Glass Door Refrigerator, 670 | W730 x D845 x H2105mm | \$ 4,156.00 |
| MCF8601 | 1 Glass Door Freezer , 670L | W730 x D845 x H2105mm | \$ 5,736.00 |
| MCF8605 | 2 Glass Door Refrigerator, 1300L | W1314 x D845 x H2105mm | \$ 5,736.00 |
| MCF8602 | 2 Glass Door Freezer , 1300L | W1314 x D845 x H2105mm | \$ 7,694.00 |

ATOSA GLASS DOOR BOTTOM MOUNT REFRIGERATORS p14)

| | | | |
|-----------|-----------------------------------------------|------------------------|-------------|
| P380WA | 1 Glass Door Bottom Mount Refrigerator, 380L | W606 x D620 x H1940mm | \$ 1,619.00 |
| P1000WB-A | 2 Glass Door Bottom Mount Refrigerator, 1000L | W1130 x D720 x H2023mm | \$ 2,869.00 |

SOLID DOOR COOLING/FREEZING TABLES. RH, 700mm Depth (p16)

| | | | |
|---------|---------------------------------------|-----------------------|-------------|
| EPF3422 | 2 Solid Door Refrigerator Table, 280L | W1360 x D700 x H838mm | \$ 2,994.00 |
| EPF3462 | 2 Solid Door Freezer , 280L | W1360 x D700 x H838mm | \$ 3,549.00 |
| EPF3432 | 3 Solid Door Refrigerator, 450L | W1795 x D700 x H838mm | \$ 3,361.00 |
| EPF3472 | 3 Solid Door Freezer , 450L | W1795 x D700 x H838mm | \$ 3,961.00 |
| EPF3442 | 4 Solid Door Refrigerator, 560L | W2230 x D700 x H838mm | \$ 4,124.00 |
| EPF3482 | 4 Solid Door Freezer , 560L | W2230 x D700 x H838mm | \$ 5,638.00 |

GLASS DOOR COOLING/FREEZING TABLES, RH, 600mm Depth (p18)

| | | | |
|---------|----------------------------------------|-----------------------|-------------|
| EPF3721 | 2 Glass Door Refrigerator Table, 300L | W1360 x D600 x H838mm | \$ 3,331.00 |
| EPF3731 | 3 Glass Door Refrigerator Table, 4500L | W1795 x D600 x H838mm | \$ 3,836.00 |
| EPF3741 | 4 Glass Door Refrigerator Table, 560L | W2230 x D600 x H838mm | \$ 4,799.00 |

SOLID DOOR COOLING/FREEZING UNDERCOUNTER. LH, 600mm Depth (p20)

| | | | |
|---------|------------------------------------|-----------------------|-------------|
| YPF9020 | 2 Solid Door Refrigerator, 220L | W1200 x D600 x H838mm | \$ 2,994.00 |
| YPF9025 | 2 Solid Door Freezer , 220L | W1200 x D600 x H838mm | \$ 3,836.00 |
| YPF9030 | 3 Solid Door Refrigerator, 300L | W1500 x D600 x H838mm | \$ 3,231.00 |
| YPF9035 | 3 Solid Door Freezer , 300L | W1500 x D600 x H838mm | \$ 3,824.00 |
| YPF9040 | 4 Solid Door Refrigerator, 390L | W1800 x D600 x H838mm | \$ 3,361.00 |
| YPF9045 | 4 Solid Door Freezer , 390L | W1800 x D600 x H838mm | \$ 3,961.00 |

SANDWICH PREP TABLE (p22)

| | | | |
|---------|-----------------------------------------------|------------------------|-------------|
| MSF8301 | 1 Door Sandwich Prep Table Refrigerator, 203L | W698 x D762 x H1124mm | \$ 2,974.00 |
| MSF8302 | 2 Door Sandwich Prep Table Refrigerator, 379L | W1225 x D762 x H1124mm | \$ 3,769.00 |
| MSF8303 | 2 Door Sandwich Prep Table Refrigerator, 487L | W1584 x D762 x H1124mm | \$ 4,681.00 |
| MSF8304 | 3 Door Sandwich Prep Table Refrigerator, 598L | W1846 x D762 x H1124mm | \$ 5,594.00 |

PIZZA PREP TABLE (p24)

| | | | |
|---------|---------------------------------------------------|------------------------|-------------|
| MSF8201 | 1 Door PIZZA Prep Table Refrigerator, 203L | W1117 x D840 x H1035mm | \$ 4,106.00 |
| MSF8202 | 2 Door PIZZA Prep Table Refrigerator, 379L | W1702 x D840 x H1035mm | \$ 5,519.00 |
| MSF8204 | 3 Door PIZZA Prep Table Refrigerator, 598L | W2362 x D840 x H1035mm | \$ 7,656.00 |

PIZZA PREP TABLE REFRIGERATORS (p26)

| | | | |
|---------|------------------------------------------------------|------------------------|-------------|
| EPF3480 | 2 Door, 7 Drawer PIZZA Prep Table Refrigerator, 485L | W2010 x D800 x H1000mm | \$ 5,461.00 |
| EPF3485 | 3 Door PIZZA Prep Table Refrigerator, 485L | W2010 x D800 x H1000mm | \$ 4,861.00 |

| | | | |
|---------|------------------------------------------------------|------------------------|-------------|
| EPF3490 | 1 Door, 7 Drawer PIZZA Prep Table Refrigerator, 485L | W2010 x D800 x H1000mm | \$ 4,169.00 |
| EPF3495 | 2 Door PIZZA Prep Table Refrigerator, 485L | W2010 x D800 x H1000mm | \$ 3,944.00 |

SALADETTES (p30)

| | | | |
|---------|---------------------------------------|------------------------|-------------|
| ESL3800 | 2 Door with Salad well | W900 x D700 x H888mm | \$ 1,924.00 |
| ESL3801 | 2 Door Table Top | W900 x D700 x H888mm | \$ 1,924.00 |
| ESL3831 | 2 Door Pizzatable Marble Top | W900 x D700 x H888mm | \$ 2,256.00 |
| ESL3832 | 2 Door Open Top | W900 x D700 x H888mm | \$ 2,299.00 |
| ESL3850 | 3 Door Pizzatable Marble Top | W1365 x D700 x H1025mm | \$ 3,163.00 |
| ESL3851 | 3 Door Open Top | W1365 x D700 x H1040mm | \$ 2,999.00 |
| ESL3864 | 3 Door Pizzatable Marble Top + Canopy | W1365 x D700 x H1120mm | \$ 3,163.00 |

HOT FOOD DISPLAY (p40)

| | | | |
|--------|-----------------------------------------|-----------------------|-------------|
| CRB-4 | Hot Food Display Series (4 x 1/2 Pans) | W730 x D650 x H780mm | \$ 3,119.00 |
| CRB-6 | Hot Food Display Series (6 x 1/2 Pans) | W1055 x D650 x H780mm | \$ 3,369.00 |
| CRB-8 | Hot Food Display Series (8 x 1/2 Pans) | W1380 x D650 x H780mm | \$ 3,744.00 |
| CRB-10 | Hot Food Display Series (10 x 1/2 Pans) | W1705 x D650 x H780mm | \$ 4,119.00 |
| CRB-12 | Hot Food Display Series (12 x 1/2 Pans) | W2030 x D650 x H780mm | \$ 4,494.00 |

ESL COUNTER TOP SALAD BAR (p42)

| | | | |
|---------|-----------------------------|----------------|-------------|
| ESL3880 | W1205 x D335 x H460mm, 38kg | BAC GN1/4 x 5 | \$ 1,236.00 |
| ESL3881 | W1205 x D395 x H460mm, 41kg | BAC GN1/3 x 4 | \$ 1,236.00 |
| ESL3861 | W1405 x D335 x H460mm, 38kg | BAC GN1/4 x 6 | \$ 1,319.00 |
| ESL3882 | W1415 x D395 x H460mm, 38kg | BAC GN1/3 x 6 | \$ 1,319.00 |
| ESL3883 | W1505 x D335 x H460mm, 38kg | BAC GN1/4 x 7 | \$ 1,374.00 |
| ESL3884 | W1505 x D395 x H460mm, 38kg | BAC GN1/3 x 6 | \$ 1,374.00 |
| ESL3885 | W1600 x D335 x H460mm, 38kg | BAC GN1/4 x 7 | \$ 1,511.00 |
| ESL3886 | W1600 x D395 x H460mm, 38kg | BAC GN1/3 x 7 | \$ 1,511.00 |
| ESL3887 | W1805 x D335 x H460mm, 38kg | BAC GN1/4 x 8 | \$ 1,649.00 |
| ESL3888 | W1805 x D395 x H460mm, 38kg | BAC GN1/3 x 8 | \$ 1,649.00 |
| ESL3889 | W2005 x D335 x H460mm, 38kg | BAC GN1/4 x 10 | \$ 1,786.00 |
| ESL3890 | W2005 x D395 x H460mm, 38kg | BAC GN1/3 x 9 | \$ 1,786.00 |

Chiller/Freezer Cabinet (p44)

| | | | |
|---------|--------------------------|----------------------|-------------|
| MBC24G | Glass Door Chiller, 145L | W605 x D635 x H785mm | \$ 1,237.50 |
| MBC24FG | Glass Door Freezer, 145L | W605 x D635 x H785mm | \$ 1,375.00 |
| MBC24R | Solid Door Chiller, 145L | W605 x D635 x H785mm | \$ 1,237.50 |
| MBC24FG | Solid Door Freezer, 145L | W605 x D635 x H785mm | \$ 1,375.00 |

BACK BAR REFRIGERATOR Stainless Steel (p46)

| | | | |
|--------|-----------------------------|------------------------|-------------|
| MBB48G | Back Bar Refrigerator, 365L | W1220 x D714 x H1068mm | \$ 3,731.00 |
| MBB59G | Back Bar Refrigerator, 390L | W1467 x D714 x H1068mm | \$ 4,369.00 |

KEG COOLERS (p48)

| | | | |
|-------|------------------|-----------------------------|-------------|
| MKC23 | Keg Cooler, 220L | W585 x D791 x H985 + 395mm | \$ 2,313.00 |
| MKC58 | Keg Cooler, 390L | W1467 x D714 x H1067 +395mm | \$ 4,313.00 |
| MKC90 | Keg Cooler, 850L | W2267 x D714 x H1067 +395mm | \$ 5,813.00 |

CHEF BASES (p50)

| | | | |
|---------|--------------------------|-----------------------|-------------|
| MGF8450 | 2 Drawer Chef Base, 260L | W1284 x D815 x H676mm | \$ 4,991.00 |
| MGF8453 | 4 Drawer Chef Base, 420L | W1840 x D815 x H676mm | \$ 6,161.00 |

CAKE SHOWCASES (p52)

| | | | |
|--------|--------------------------------------|---------------------|-------------|
| TY110L | Curved Glass Cake Display 700mm wide | 700 x D560 x H670mm | \$ 1,636.00 |
| TY130L | Curved Glass Cake Display 900mm wide | 900 x D560 x H670mm | \$ 1,911.00 |
| TF120L | Square Glass Cake Display 700mm wide | 700 x D560 x H670mm | \$ 1,894.00 |
| TF160L | Square Glass Cake Display 900mm wide | 900 x D560 x H670mm | \$ 2,081.00 |

SQUARE GLASS CAKE SHOWCASES (P54)

| | | | |
|--------|------------------------------------------|------------------------------|-------------|
| DF097F | 2 Shelf + Base Square Glass, 900mm wide | W900 x D742 x H1200mm, 290L | \$ 4,731.00 |
| DF127F | 2 Shelf + Base Square Glass, 1200mm wide | W1200 x D742 x H1200mm, 395L | \$ 5,174.00 |
| DF157F | 2 Shelf + Base Square Glass, 1500mm wide | W1500 x D742 x H1200mm, 497L | \$ 6,036.00 |
| DF177F | 2 Shelf + Base Square Glass, 1700mm wide | W1700 x D742 x H1200mm, 570L | \$ 6,324.00 |

| | | | |
|---------|-----------------------------------------|------------------------------|-------------|
| WDF097Z | 3 Shelf + Base Square Glass 900mm wide | W900 x D750 x H1350mm, 373L | \$ 4,731.00 |
| WDF127Z | 3 Shelf + Base Square Glass 1200mm wide | W1200 x D750 x H1350mm, 505L | \$ 5,174.00 |
| WDF157Z | 3 Shelf + Base Square Glass 1500mm wide | W1500 x D750 x H1350mm, 630L | \$ 6,036.00 |
| WDF177Z | 3 Shelf + Base Square Glass 1700mm wide | W1700 x D750 x H1350mm, 730L | \$ 6,324.00 |

CURVED GLASS CAKE SHOWCASES (P56)

| | | | |
|--------|-------------------------------------------|------------------------------|-------------|
| DF097D | 2 Shelf + Base, Curved Glass, 900mm wide | W900 x D750 x H1350mm, 290L | \$ 5,319.00 |
| DF127D | 2 Shelf + Base, Curved Glass, 1200mm wide | W1200 x D750 x H1350mm, 395L | \$ 6,324.00 |
| DF157D | 2 Shelf + Base, Curved Glass, 1500mm wide | W1500 x D750 x H1350mm, 497L | \$ 7,186.00 |
| DF177D | 2 Shelf + Base, Curved Glass, 1700mm wide | W1700 x D750 x H1350mm, 570L | \$ 7,981.00 |

DUCTLESS EXHAUST HOOD SYSTEM (p99)

| | | | |
|------------|-----------------------------------------|---------------------------------------------------|--------------|
| DH1500-750 | Suits Electrical Appliances up 8Kw each | W 1500 x D 750 X H 1400mm | \$ 10,986.00 |
| DH1500-851 | Suits Electrical Appliances up 8Kw each | W 1500 x D 850 X H 1400mm | \$ 10,986.00 |
| DH1800 | Suits Electrical Appliances up 8Kw each | W 1800 x D 750 X H 1400mm (620mm bench height) | \$ 13,186.00 |

TOP MOUNT FULL DOOR REFRIGERATORS & FREEZERS

| | | | |
|------------|-----------------------|---------------------------------------------------|-------------|
| LR-681PCL | 1 Door Refrigerator | Dims(mm): 600W x 810D x 1900H, Vol 580L, W 135kg | \$ 3,719.00 |
| LF-681PCL | 1 Door Freezer | Dims(mm): 600W x 810D x 1900H, Vol 580L, W 135kg | \$ 4,094.00 |
| LR-1381PCL | 2 Door Refrigerator | Dims(mm): 1260Wx 810D x 1900H, Vol 1130L, W 172kg | \$ 5,468.00 |
| LF-1381PCL | 2 Door Freezer | Dims(mm): 1260Wx 810D x 1900H, Vol 1130L, W 172kg | \$ 6,566.00 |
| LR-1981PCL | 3 Door Refrigerator | Dims(mm): 1900Wx 810D x 1900H, Vol 1780L, W 240kg | \$ 8,363.00 |
| LF-1981PCL | 3 Door Freezer | Dims(mm): 1900Wx 810D x 1900H, Vol 1780L, W 240kg | \$ 9,100.00 |

TOP MOUNT 1/2 DOOR REFRIGERATORS & FREEZERS

| | | | |
|-----------|-----------------------------|---------------------------------------------------|-------------|
| LR-681PC | 2 x 1/2 Door Refrigerator | Dims(mm): 640W x 810D x 1900H, Vol 580L, W 135kg | \$ 3,719.00 |
| LF-681PC | 2 x 1/2 Door Freezer | Dims(mm): 640W x 810D x 1900H, Vol 580L, W 135kg | \$ 4,094.00 |
| LR-1381PC | 4 x 1/2 Door Refrigerator | Dims(mm): 1260Wx 810D x 1900H, Vol 1130, W 172kgL | \$ 5,468.00 |
| LF-1381PC | 4 x 1/2 Door Freezer | Dims(mm): 1260Wx 810D x 1900H, Vol 1130, W 172kgL | \$ 6,566.00 |
| LR-1981PC | 6 x 1/2 Door Refrigerator | Dims(mm): 1900Wx 810D x 1900H, Vol 1780L, W 240kg | \$ 8,363.00 |
| LF-1981PC | 6 x 1/2 Door Freezer | Dims(mm): 1900Wx 810D x 1900H, Vol 1780L, W 240kg | \$ 9,100.00 |

TOP MOUNT DUAL TEMPERATURE REFRIGERATOR-FREEZER

| | | | |
|------------|----------------------------------------------------------------------------|----------------------------------------|-------------|
| LRF1382PCL | Dual Temperature 1 Dr Refrigerator (500L), 1 Dr Freezer (500L) | | \$ 7,015.00 |
| LRF1382PC | Dual Temperature 2 x 1/2 Dr Refrigerator (500L), 2 x 1/2 Dr Freezer (500L) | | \$ 7,015.00 |
| | | Dims(mm): 1260Wx 810D x 1900H, W 172kg | |

TOP MOUNT (DELUX) FULL DOOR REFRIGERATORS & FREEZERS

| | | | |
|------------|-----------------------------|---------------------------------------------------|-------------|
| LRT-771PC | 1 Solid Door Refrigerator | Dims(mm): 681W x 787D x 2092H, Vol 620L, W124kg | \$ 3,565.00 |
| LFT-771PC | 1 Solid Door Freezer | Dims(mm): 681W x 787D x 2092H, Vol 620L, W124kg | \$ 4,182.00 |
| LRT-1471PC | 2 Solid Door Refrigerator | Dims(mm): 1372Wx 787D x 2092H, Vol 1270L, W 176kg | \$ 5,430.00 |
| LFT-1471PC | 2 Solid Door Freezer | Dims(mm): 1372Wx 787D x 2092H, Vol 1270L, W 176kg | \$ 6,316.00 |
| LRT-72T | 3 Solid Door Refrigerator | Dims(mm): 2057Wx 787D x 2092H, Vol 1950L, W 304kg | \$ 7,704.00 |
| LFT-72T | 3 Solid Door Freezer | Dims(mm): 2057Wx 787D x 2092H, Vol 1950L, W 304kg | \$ 9,659.00 |

TOP MOUNT (DELUX) HALF DOOR REFRIGERATORS & FREEZERS

| | | | |
|-----------|-----------------------------------|---------------------------------------------------|-------------|
| LRT-771H | 2 x 1/2 Solid Door Refrigerator | Dims(mm): 681W x 787D x 2078H, Vol 521L, W 124kg | \$ 3,565.00 |
| LFT-771H | 2 x 1/2 Solid Door Freezer | Dims(mm): 681W x 787D x 2078H, Vol 521L, W 124kg | \$ 4,182.00 |
| LRT-1471H | 4 x 1/2 Solid Door Refrigerator | Dims(mm): 1370Wx 787D x 2078H, Vol 1175L, W 176kg | \$ 5,430.00 |
| LFT-1471H | 4 x 1/2 Solid Door Freezer | Dims(mm): 1370Wx 787D x 2078H, Vol 1175L, W 176kg | \$ 6,316.00 |
| LRT-72H | 6 x 1/2 Solid Door Refrigerator | Dims(mm): 2060Wx 787D x 2078H, Vol 1832L, W 304kg | \$ 7,704.00 |
| LFT-72H | 6 x 1/2 Solid Door Freezer | Dims(mm): 2060Wx 787D x 2078H, Vol 1832L, W 304kg | \$ 9,659.00 |

TOP MOUNT (DELUX) GLASS DOOR REFRIGERATORS & FREEZERS

| | | | |
|-----------|-----------------------------|---------------------------------------------------|--------------|
| LRT-771G | 1 Glass Door Refrigerator | Dims(mm): 681W x 786D x 2067H, Vol 620L, W 124kg | \$ 4,594.00 |
| LFT-771G | 1 Glass Door Freezer | Dims(mm): 681W x 786D x 2067H, Vol 620L, W 124kg | \$ 5,910.00 |
| LRT-1471G | 2 Glass Door Refrigerator | Dims(mm): 1370Wx 787D x 2067H, Vol 1270L, W 184kg | \$ 7,110.00 |
| LFT-1471G | 2 Glass Door Freezer | Dims(mm): 1370Wx 787D x 2067H, Vol 1270L, W 184kg | \$ 9,073.00 |
| LRT-72TG | 3 Glass Door Refrigerator | Dims(mm): 2057Wx 787D x 2067H, Vol 1950L, W 240kg | \$ 10,323.00 |

BOTTOM MOUNT REFRIGERATORS AND FREEZERS

| | | | |
|--------------|----------------------------------|---------------------------------------------------|-------------|
| LRB-771PC* | 1 Door Refrigerator | Dims(mm): 680W x 787D x 2099H, Vol 600L, W 109kg | \$ 4,024.00 |
| LRB-771PCG* | 1 Glass Door Refrigerator | Dims(mm): 680W x 787D x 2099H, Vol 600L, W 122kg | \$ 4,794.00 |
| LFB-771PC* | 1 Door Freezer | Dims(mm): 680W x 787D x 2099H, Vol 600L, W 109kg | \$ 4,596.00 |
| LRB-1471PC* | 2 Door Refrigerator | Dims(mm): 1372Wx 787D x 2099H, Vol 1245L, W 168kg | \$ 6,029.00 |
| LRB-1471PCG* | 2 Glass Door Refrigerator | Dims(mm): 1372Wx 787D x 2099H, Vol 1245L, W 206kg | \$ 7,327.00 |
| LFB-1471PC* | 2 Door Freezer | Dims(mm): 1372Wx 787D x 2099H, Vol 1245L, W 168kg | \$ 7,395.00 |
| LRB72T* | 3 Door Refrigerator | Dims(mm): 2057Wx 787D x 2099H, Vol 1245L, W 270kg | \$ 7,999.00 |
| LFB72T* | 3 Door Freezer | Dims(mm): 2057Wx 787D x 2099H, Vol 1245L, W 270kg | \$ 9,262.00 |

UNDER COUNTER SOLID DOOR REFRIGERATORS & FREEZERS

| | | | |
|--------------|-----------------------------|-------------------------------------------------|-------------|
| LNRT-1B-900 | 1 Solid Door Refrigerator | Dims(mm): 900W x 700D x 860H, Vol 213L, W 71kg | \$ 2,483.00 |
| LNFT-1B-900 | 1 Solid Door Freezer | Dims(mm): 900W x 700D x 860H, Vol 213L, W 71kg | \$ 3,358.00 |
| LNRT-2B-1200 | 2 Solid Door Refrigerator | Dims(mm): 1200Wx 700 x 860H, Vol 300L, W 90kg | \$ 3,058.00 |
| LNFT-2B-1200 | 2 Solid Door Freezer | Dims(mm): 1200Wx 700 x 860H, Vol 300L, W 90kg | \$ 3,857.00 |
| LNRT-2B-1500 | 2 Solid Door Refrigerator | Dims(mm): 1500Wx 700D x 860H, Vol 410L, W 100kg | \$ 3,520.00 |
| LNFT-2B-1500 | 2 Solid Door Freezer | Dims(mm): 1500Wx 700D x 860H, Vol 410L, W 100kg | \$ 4,369.00 |
| LNRT-2B-1800 | 3 Solid Door Refrigerator | Dims(mm): 1800Wx 700D x 860H, Vol 521L, W 125kg | \$ 4,281.00 |
| LNFT-2B-1800 | 3 Solid Door Freezer | Dims(mm): 1800Wx 700D x 860H, Vol 521L, W 125kg | \$ 4,918.00 |

UNDER COUNTER with 2 Drawer Systems

| | | | |
|----------------|----------------------|-------------------------------------------------|-------------|
| LNRT-1B-90-V | 1 Door Salad Table | Dims(mm): 900W x 700D x 850H, Vol 213L, W 71kg | \$ 3,845.00 |
| LNRT-2B-12-VV | 2 Door Sandwich Prep | Dims(mm): 1200Wx 700 x 850H, Vol 300L, W 115kg | \$ 5,105.00 |
| LNRT-2B-15-VV | 2 Door Sandwich Prep | Dims(mm): 1500Wx 700D x 850H, Vol 411L, W 144kg | \$ 5,367.00 |
| LNRT-3B-18-VVV | 3 Door Sandwich Prep | Dims(mm): 1800Wx 700D x 850H, Vol 521L, W 169kg | \$ 6,715.00 |

UNDER COUNTER GLASS DOOR REFRIGERATORS

| | | | |
|--------------|---------------------------|-------------------------------------------------|-------------|
| LGRT-1B-900 | 1 Glass Door Refrigerator | Dims(mm): 900W x 700D x 860H, Vol 213L, W 71kg | \$ 3,045.00 |
| LGRT-2B-1200 | 2 Glass Door Refrigerator | Dims(mm): 1200Wx 700 x 860H, Vol 300L, W 90kg | \$ 3,832.00 |
| LGRT-2B-1500 | 2 Glass Door Refrigerator | Dims(mm): 1500Wx 700D x 860H, Vol 410L, W 100kg | \$ 4,406.00 |
| LGRT-3B-1800 | 3 Glass Door Refrigerator | Dims(mm): 1800Wx 700D x 860H, Vol 521L, W 125kg | \$ 5,068.00 |

PIZZA PREP REFRIGERATOR with condensing unit on Right Side

| | | | |
|---------|-------------------|---------------------------------------------------|-------------|
| LPT-44* | 1 Door Pizza Prep | Dims(mm): 1128W x 926D x 1065H, Vol 320L, W 137kg | \$ 4,319.00 |
| LPT-67 | 2 Door Pizza Prep | Dims(mm): 1702Wx 926 x 1065H, Vol 582L, W 187kg | \$ 6,528.00 |
| LPT-93 | 2 Door Pizza Prep | Dims(mm): 2370Wx 926D x 1065H, Vol 872L, W 231kg | \$ 9,115.00 |

SANDWICH / SALAD PREP REFRIGERATOR with condensing unit on Left Side

| | | | |
|--------------|----------------------|--------------------------------------------------|-------------|
| LHRT-1B-900 | 1 Door Sandwich Prep | Dims(mm): 900W x 700D x 1016H, Vol 213L, W 71kg | \$ 3,640.00 |
| LHRT-2B-1200 | 2 Door Sandwich Prep | Dims(mm): 1200Wx 700 x 1016H, Vol 300L, W 104kg | \$ 4,154.00 |
| LHRT-2B-1500 | 2 Door Sandwich Prep | Dims(mm): 1500Wx 700D x 1016H, Vol 411L, W 144kg | \$ 4,758.00 |
| LHRT-2B-1800 | 3 Door Sandwich Prep | Dims(mm): 1800Wx 700D x 1016H, Vol 521L, W 169kg | \$ 6,029.00 |

SANDWICH / SALAD PREP REFRIGERATOR with air over pots system

| | | | |
|----------|----------------------|--------------------------------------------------|-------------|
| LST-200R | 1 Door Sandwich Prep | Dims(mm): 699W x 762D x 1082H, Vol 199L, W 71kg | \$ 3,702.00 |
| LST-350R | 2 Door Sandwich Prep | Dims(mm): 1227Wx 762 x 1082H, Vol 372L, W 86kg | \$ 4,693.00 |
| LST-500R | 2 Door Sandwich Prep | Dims(mm): 1533Wx 762D x 1082H, Vol 474L, W 98kg | \$ 5,567.00 |
| LST-650R | 3 Door Sandwich Prep | Dims(mm): 1839Wx 762D x 1082H, Vol 572L, W 134kg | \$ 6,865.00 |

MEGA TOP SANDWICH PREP REFRIGERATORS with air over pots system

| | | | |
|----------|----------------------------------|--------------------------------------------------|-------------|
| LMT-200R | 1 Door Sandwich/Salad Prep Bench | Dims(mm): 699W x 841D x 1122H, Vol 199L, W 71kg | \$ 4,993.00 |
| LMT-350R | 2 Door Sandwich/Salad Prep Bench | Dims(mm): 1227Wx 841 x 1122H, Vol 372L, W 104kg | \$ 6,191.00 |
| LMT-500R | 2 Door Sandwich/Salad Prep Bench | Dims(mm): 1533Wx 841D x 1122H, Vol 474L, W 144kg | \$ 6,541.00 |
| LMT-650R | 3 Door Sandwich/Salad Prep Bench | Dims(mm): 1839Wx 841D x 1122H, Vol 572L, W 169kg | \$ 7,365.00 |

CHEF BASES REFRIGERATORS with condensing unit on Right Side

| | | | |
|---------|---------------------------------|--------------------------------------------------|-------------|
| LCB-53* | 2 Drawer Chef Base Refrigerator | Dims(mm): 1340W x 775D x 637H, Vol 277L, W 107kg | \$ 5,505.00 |
| LCB-71* | 4 Drawer Chef Base Refrigerator | Dims(mm): 1790W x 775D x 637H, Vol 405L, W 135kg | \$ 7,794.00 |
| LCB-74* | 4 Drawer Chef Base Refrigerator | Dims(mm): 1880W x 775D x 637H, Vol 405L, W 146kg | \$ 7,964.00 |
| LCB-83* | 4 Drawer Chef Base Refrigerator | Dims(mm): 2115W x 775D x 637H, Vol 487L, W 155kg | \$ 8,014.00 |
| LCB-86* | 4 Drawer Chef Base Refrigerator | Dims(mm): 2185W x 775D x 637H, Vol 487L, W 158kg | \$ 8,578.00 |
| LCB-96* | 4 Drawer Chef Base Refrigerator | Dims(mm): 2440W x 775D x 637H, Vol 606L, W 164kg | \$ 9,215.00 |
| LCB-98* | 2 Drawer Chef Base Refrigerator | Dims(mm): 2489W x 775D x 637H, Vol 606L, W 168kg | \$ 9,363.00 |

Multi-Purpose Dehydrators

| | | | |
|----------|------------------------|----------------------------------------------------------------------------------|-------------|
| DY110-H* | 1 Door Food Dehydrator | Dims(mm): 640Wx 811D x 1822H, Capacity per Tray 4kg. No. of Shelves 11, W 94kg | \$ 4,743.00 |
| DY220-H* | 2 Door Food Dehydrator | Dims(mm): 1260Wx 811D x 1822H, Capacity per Tray 4kg. No. of Shelves 22, W 176kg | \$ 6,816.00 |
| DY330-H* | 3 Door Food Dehydrator | Dims(mm): 1900Wx 811D x 1822H, Capacity per Tray 4kg. No. of Shelves 33, W 265kg | \$ 9,025.00 |

GLASS DOOR MERCHANDISER (p11)

| | | | | |
|--------|---------------------------------|---------------|-------|--------------|
| SGM-5 | 1 Door Bench Top Refrigerator | 636x600x845 | 100L | \$ 2,130.00 |
| SGF-5 | 1 Door Bench Top Freezer | 636x600x845 | 100L | \$ 2,940.00 |
| SGM-20 | 1 Door Refrigerator | 685x685x2100 | 526L | \$ 3,553.85 |
| SGF-20 | 1 Door Freezer | 685x685x2100 | 526L | \$ 5,602.08 |
| SGM-35 | 2 Door Refrigerator | 1003x700x2100 | 812L | \$ 5,154.58 |
| SGF-35 | 2 Door Freezer | 1003x700x2100 | 812L | \$ 8,568.84 |
| SGM-49 | 2 Door Refrigerator | 1382x700x2100 | 1152L | \$ 5,678.25 |
| SGF-49 | 2 Door Freezer | 1382x700x2100 | 1152L | \$ 9,354.63 |
| SGM-72 | 3 Door Refrigerator | 2079x700x2100 | 1779L | \$ 6,893.00 |
| SGF-72 | 3 Door Freezer | 2079x700x2100 | 1779L | \$ 13,139.24 |

TOP MOUNT (p15)

| | | | | |
|----------|-----------------------------------------------------|---------------|----------|--------------|
| SRT25-1 | 1 Door Refrigerator | 640x850x1926 | 574L | \$ 4,095.00 |
| SFT25-1 | 1 Door Freezer | 640x850x1926 | 574L | \$ 4,550.00 |
| SRT45-2 | 2 Door Refrigerator | 1260x850x1926 | 1215L | \$ 5,905.00 |
| SFT45-2 | 2 Door Freezer | 1260x850x1926 | 1215L | \$ 7,295.00 |
| SRT65-3 | 3 Door Refrigerator | 1900x850x1926 | 1876L | \$ 8,970.00 |
| SFT65-3 | 3 Door Freezer | 1900x850x1926 | 1876L | \$ 10,590.00 |
| SRT25-2 | 2 x 1/2 Door Refrigerator | 640x850x1926 | 572L | \$ 4,235.00 |
| SFT25-2 | 2 x 1/2 Door Freezer | 640x850x1926 | 572L | \$ 4,625.00 |
| SRT45-4 | 4 x 1/2 Door Refrigerator | 1260x850x1926 | 1210L | \$ 6,035.00 |
| SFT45-4 | 4 x 1/2 Door Freezer | 1260x850x1926 | 1210L | \$ 7,550.00 |
| SRT65-6 | 6 x 1/2 Door Refrigerator | 1900x850x1926 | 1868L | \$ 9,250.00 |
| SFT65-6 | 6 x 1/2 Door Freezer | 1900x850x1926 | 1868L | \$ 10,905.00 |
| SRFT25-2 | 2 x 1/2 Door Dual Temperature Refrigerator/ Freezer | 640x850x1926 | 242/222 | \$ 4,993.63 |
| SRFT45-2 | 2 Door Dual Temperature Refrigerator/ Freezer | 1260x850x1926 | 576/576 | \$ 7,281.19 |
| SRFT65-3 | 3 Door Dual Temperature Refrigerator/ Freezer | 1900x850x1926 | 575/1235 | \$ 8,647.34 |
| SRT25-1G | 1 Glass Door Refrigerator | 640x850x1926 | 574L | \$ 4,582.43 |
| SRT45-2G | 2 Glass Door Refrigerator | 1260x850x1926 | 1215L | \$ 6,610.17 |
| SRT65-3G | 3 Glass Door Refrigerator | 1900x850x1926 | 1876L | \$ 9,572.61 |
| SFT25-1G | 1 Glass Door Freezer | 640x850x1926 | 574L | \$ 5,545.42 |
| SFT45-2G | 2 Glass Door Freezer | 1260x850x1926 | 1215L | \$ 9,435.46 |

UNDERCOUNTER SIDE PREP TABLE (p31)

| | | | | |
|----------|-----------------------------------------------|--------------|------|-------------|
| SUR9-1 | 1 Door Refrigerator | 900x700x855 | 198L | \$ 3,115.00 |
| SUF9-1 | 1 Door Freezer | 900x700x855 | 198L | \$ 3,375.00 |
| SUR12-2 | 2 Door Refrigerator | 1200x700x855 | 311L | \$ 3,415.00 |
| SUF12-2 | 2 Door Freezer | 1200x700x855 | 311L | \$ 3,710.00 |
| SUR15-2 | 2 Door Refrigerator | 1500x700x855 | 425L | \$ 3,900.00 |
| SUF15-2 | 2 Door Freezer | 1500x700x855 | 425L | \$ 4,100.00 |
| SUR18-3 | 3 Door Refrigerator | 1800x700x855 | 538L | \$ 4,119.32 |
| SUF18-3 | 3 Door Freezer | 1800x700x855 | 538L | \$ 4,800.00 |
| SUR24-4 | 4 Door Refrigerator | 2400x700x855 | 600L | \$ 7,300.06 |
| SURF12-2 | 2 Door Dual Temperature Refrigerator/ Freezer | 1200x700x800 | 311L | \$ 4,650.00 |
| SURF15-2 | 2 Door Dual Temperature Refrigerator/ Freezer | 1500x700x855 | 425L | \$ 5,120.00 |
| SURF18-3 | 3 Door Dual Temperature Refrigerator/ Freezer | 1800x700x855 | 538L | \$ 5,700.00 |

| UNDERCOUNTER GLASS DOOR (p25) | | Dims (WxDxH mm) | Capacity | |
|--------------------------------------|---------------------------|------------------------|-----------------|-------------|
| SGR9-1 | 1 Glass Door Refrigerator | 900x700x855 | 121L | \$ 3,365.00 |
| SGR12-2 | 2 Glass Door Refrigerator | 1200x700x855 | 309L | \$ 3,989.00 |
| SGR15-2 | 2 Glass Door Refrigerator | 1500x700x855 | 420L | \$ 4,480.00 |
| SGR18-3 | 3 Glass Door Refrigerator | 1800x700x855 | 516L | \$ 5,159.00 |
| SGR24-4 | 4 Glass Door Refrigerator | 2400x700x855 | 600L | \$ 6,889.00 |

| UNDERCOUNTER 3 DRAWER (p26) | | Dims (WxDxH mm) | Capacity | |
|------------------------------------|----------------------------------|------------------------|-----------------|-------------|
| SUR9-3D-3 | 3 Drawer Refrigerator | 900x700x855 | 198L | \$ 4,088.00 |
| SUF9-3D-3 | 3 Drawer Freezer | 900x700x855 | 198L | \$ 4,232.00 |
| SUR12-3D-3 | 1 Door + 3 Drawer Refrigerator | 1200x700x855 | 311L | \$ 4,314.00 |
| SUF12-3D-3 | 1 Door + 3 Drawer Freezer | 1200x700x855 | 311L | \$ 4,775.00 |
| SUR12-3D-6 | 6 Drawer Refrigerator | 1200x700x855 | 311L | \$ 5,598.00 |
| SUF12-3D-6 | 6 Drawer Freezer | 1200x700x855 | 311L | \$ 5,884.00 |
| SUR15-3D-3 | 1 Door + 3 Drawer Refrigerator | 1500x700x855 | 425L | \$ 4,756.00 |
| SUF15-3D-3 | 1 Door + 3 Drawer Freezer | 1500x700x855 | 425L | \$ 5,037.00 |
| SUR15-3D-6 | 6 Drawer Refrigerator | 1500x700x855 | 425L | \$ 5,865.00 |
| SUF15-3D-6 | 6 Drawer Freezer | 1500x700x855 | 425L | \$ 6,141.00 |
| SUR18-3D-3 | 2 Door + 3 Drawer Refrigerator | 1800x700x855 | 538L | \$ 5,236.00 |
| SUR18-3D-6 | 1 Door + 6 Drawer Refrigerator | 1800x700x855 | 538L | \$ 6,310.00 |
| SUR18-3D-9 | 9 Drawer Refrigerator | 1800x700x855 | 538L | \$ 7,385.00 |

| UNDERCOUNTER 2 DRAWER (p26) | | Dims (WxDxH mm) | Capacity | |
|------------------------------------|----------------------------------|------------------------|-----------------|-------------|
| SUR9-2D-2 | 2 Drawer Refrigerator | 900x700x855 | 198L | \$ 3,785.00 |
| SUF9-2D-2 | 2 Drawer Freezer | 900x700x855 | 198L | \$ 3,972.00 |
| SUR12-2D-2 | 1 Door + 2 Drawer Refrigerator | 1200x700x855 | 311L | \$ 4,055.00 |
| SUF12-2D-2 | 1 Door + 2 Drawer Freezer | 1200x700x855 | 311L | \$ 4,485.00 |
| SUR12-2D-4 | 4 Drawer Refrigerator | 1200x700x855 | 311L | \$ 4,778.00 |
| SUF12-2D-4 | 4 Drawer Freezer | 1200x700x855 | 311L | \$ 5,234.00 |
| SUR15-2D-2 | 1 Door + 2 Drawer Refrigerator | 1500x700x855 | 425L | \$ 4,866.00 |
| SUF15-2D-2 | 1 Door + 2 Drawer Freezer | 1500x700x855 | 425L | \$ 4,723.00 |
| SUR15-2D-4 | 4 Drawer Refrigerator | 1500x700x855 | 425L | \$ 5,236.00 |
| SUF15-2D-4 | 4 Drawer Freezer | 1500x700x855 | 425L | \$ 5,512.00 |
| SUR18-2D-2 | 2 Door + 2 Drawer Refrigerator | 1800x700x855 | 538L | \$ 5,272.00 |
| SUR18-2D-4 | 1 Door + 4 Drawer Refrigerator | 1800x700x855 | 538L | \$ 5,617.00 |
| SUR18-2D-6 | 6 Drawer Refrigerator | 1800x700x855 | 538L | \$ 6,356.00 |

| SALAD SIDE PREP TABLE BUFFET (p31) | | Dims (WxDxH mm) | Capacity | |
|-------------------------------------------|----------------|------------------------|-----------------|-------------|
| SSR9-1 | 1 Refrigerator | 900x700x855 | 213L | \$ 3,650.00 |
| SSR12-2 | 2 Refrigerator | 1200x700x855 | 309L | \$ 4,105.00 |
| SSR15-2 | 2 Refrigerator | 1500x700x855 | 420L | \$ 4,510.00 |
| SSR18-3 | 3 Refrigerator | 1800x700x855 | 516L | \$ 5,450.00 |

| SALAD SIDE PREP TABLE HOOD LID (p32) | | Dims (WxDxH mm) | Capacity | |
|---------------------------------------------|-----------------------------------------------------------|------------------------|-----------------|-------------|
| SHR9-1 | 1 Door Salad Prep Table Refrigerator, holds 8 x 1/6 pots | 900x700x1034 | 213L | \$ 3,456.25 |
| SHR12-2 | 2 Door Salad Prep Table Refrigerator, holds 12 x 1/6 pots | 1200x700x1034 | 309L | \$ 4,350.00 |
| SHR15-2 | 2 Door Salad Prep Table Refrigerator, holds 14 x 1/6 pots | 1500x700x1034 | 420L | \$ 4,800.00 |
| SHR18-3 | 3 Door Salad Prep Table Refrigerator, holds 18 x 1/6 pots | 1800x700x1034 | 516L | \$ 6,200.00 |

| PIZZA PREP TABLE REFRIGERATOR (p32) | | Dims (WxDxH mm) | Capacity | |
|--------------------------------------------|-----------------------------------------------------|------------------------|-----------------|--------------|
| SPR-67SD | 2 door, Pizza Table Refrigerator with 9 x 1/3 Pots | 1702x820x1069 | 566L | \$ 7,735.98 |
| SPR-93SD | 3 door, Pizza Table Refrigerator with 12 x 1/3 Pots | 2362x820x1069 | 878L | \$ 10,583.17 |

| BACK BAR (p35) | | Dims (WxDxH mm) | Capacity | |
|---------------------------------|-------------------------------------|------------------------|---------------------|--------------|
| SB9-2G(800MM) | 2 Door Back Bar Refrigerator | 900x550x800 | 165L | \$ 4,216.49 |
| SB9-2G(900MM) | 2 Door Back Bar Refrigerator | 900x550x900 | 190L | \$ 4,400.53 |
| SB13-3G(800MM) | 3 Door Back Bar Refrigerator | 1352x550x800 | 261L | \$ 5,299.04 |
| SB13-3G(900MM) | 3 Door Back Bar Refrigerator | 1352x550x900 | 300L | \$ 5,515.55 |
| SBB-3G | 3 Door Back Bar Stainless Steel Top | 2040x590x1047 | 605L | \$ 5,687.78 |
| SBB-4G | 4 Door Back Bar Stainless Steel Top | 2620x590x1047 | 815L | \$ 6,862.42 |
| ICE MAKER (p40) | | Dims (WxDxH mm) | Capacity | |
| SIM-50A | 50kg/day, 25kg Bin | 500x625x795 | 50L | \$ 3,751.45 |
| SIM-75A | 75kg/day, 45kg Bin | 610x625x795 | 75L | \$ 4,319.85 |
| SIM-100A | 100kg/day, 64kg Bin | 660x690x995 | 100L | \$ 5,172.45 |
| SIM-200A | 200kg/day, 200kg Bin | 560x804x1708 | 200L | \$ 8,547.13 |
| SIM-300A | 300kg/day, 245kg Bin | 764x804x1708 | 300L | \$ 10,231.00 |
| BAKERY CASE SQUARE (p44) | | Dims (WxDxH mm) | Capacity | |
| SB900-2RD | Cake Display, 2 shelves | 900x700x1130 | 501L | \$ 6,349.08 |
| SB1200-2RD | Cake Display, 2 shelves | 1200x700x1130 | 669L | \$ 7,243.31 |
| SB1500-2RD | Cake Display, 2 shelves | 1500x700x1130 | 837L | \$ 8,852.93 |
| SB1800-2RD | Cake Display, 2 shelves | 1800x700x1130 | 1005L | \$ 9,930.99 |
| SB2100-2RD | Cake Display, 2 shelves | 2100x700x1130 | 1173L | \$ 11,128.26 |
| SB900-3RD | Cake Display, 3 shelves | 900x700x1330 | 501L | \$ 7,412.23 |
| SB1200-3RD | Cake Display, 3 shelves | 1200x700x1330 | 669L | \$ 8,435.62 |
| SB1500-3RD | Cake Display, 3 shelves | 1500x700x1330 | 837L | \$ 9,637.87 |
| SB1800-3RD | Cake Display, 3 shelves | 1800x700x1330 | 1005L | \$ 11,396.54 |
| SB2100-3RD | Cake Display, 3 shelves | 2100x700x1330 | 1173L | \$ 13,006.16 |
| OPEN CASE (p50) | | Dims (WxDxH mm) | Capacity | |
| SOA-900 | 4 Deck | 900x800x1500 | 430L | \$ 10,268.81 |
| SOA-1200 | 4 Deck | 1200x800x1500 | 510L | \$ 12,370.26 |
| SOA-1500 | 4 Deck | 1500x800x1500 | 600L | \$ 14,019.64 |
| SOA-1800 | 4 Deck | 1800x800x1500 | 670L | \$ 16,829.23 |
| OPEN CASE HIGH (p49) | | Dims (WxDxH mm) | Capacity | |
| SOH-900 | 3 Shelves | 900x800x1900 | 460L | \$ 11,385.89 |
| SOH-1200 | 3 Shelves | 1200x800x1900 | 547L | \$ 13,706.11 |
| SOH-1500 | 3 Shelves | 1500x800x1900 | 634L | \$ 15,571.87 |
| SOH-1800 | 3 Shelves | 1800x800x1900 | 700L | \$ 19,092.86 |
| GELATO CASE (p64) | | Dims (WxDxH mm) | Capacity | |
| SGC-1200F | | 1195x1034x1306 | 12 (1/3) 8 (1/2) | \$ 14,122.93 |
| SGC-1500F | | 1547x1034x1306 | 16 (1/3) 10 (1/2) | \$ 15,510.13 |
| SGC-1800F | | 1727x1034x1306 | 18 (1/3) 12 (1/2) | \$ 16,738.67 |
| CHOCOLATE CASE (p63) | | Dims (WxDxH mm) | Capacity | |
| SCD-1200D | | 1200x800x945 | 108L | \$ 13,115.46 |
| SCD-1500D | | 1500x800x945 | 130L | \$ 16,034.98 |
| CHEF BASE (D700) (p68) | | Dims (WxDxH mm) | Capacity | |
| SCB10-2 | 2 Drawer | 980x700x605 | 85L | \$ 6,403.18 |
| SCB14-4 | 4 Drawer | 1400x700x605 | 176L | \$ 8,003.97 |
| SCB18-6 | 6 Drawer | 1820x700x605 | 267L | \$ 9,715.17 |
| BLAST CHILLER (p75) | | Dims (WxDxH mm) | Capacity | |
| STF-16 | | | 40L | \$ 26,059.00 |
| MINI GELATO CASE (p66) | | Dims (WxDxH mm) | Capacity | |
| SGT-700 | | 714x831x395 | 3 GELATO TUB | \$ 3,708.00 |

| Model/Description | |
|------------------------------------------------------|--------------|
| ATHEN ECO 210 Freezer with LED Lighting | \$ 9,026.00 |
| ATHEN ECO 210 (U) Dual Temperature with LED Lighting | \$ 10,158.00 |
| ATHEN ECO 250 Freezer with LED Lighting | \$ 10,907.00 |
| ATHEN ECO 250 (U) Dual Temperature with LED Lighting | \$ 11,834.00 |
| ATHEN ECO 207 Crown End Freezer with LED Lighting | \$ 9,423.00 |
| MANHATTAN ECO 210 Island Slide Lid Freezer | \$ 13,039.00 |
| *SYDNEY 250 Island Slide Lid Freezer 2500mm | |
| * Subject to availability | \$ 11,466.00 |
| ALL PRICES PLUS GST (10%) | |
| <i>CABINETS ARE CRATED EX PERTH – PLUS FREIGHT</i> | |



List Prices

| Model/Description | Length | | |
|---------------------------------------------------------------------------------|---------------|----|-----------|
| ONWAVE2 HP 5E/W 250 High Performance Multideck Meat / Dairy Case (15 amp) | 2560mm | \$ | 26,313.00 |
| Product Stops 10440C x 10 | | \$ | 617.00 |
| ONWAVE2 HP 4E/Mir/B 250 High Performance Multideck Meat / Produce Case (15 amp) | 2560mm | \$ | 26,387.00 |
| Prices for Curl3 & Onwave2 are while stock lasts. | | | |

3 Green models

| | | | |
|------------------------------------------------------------------------------------------------------------------------------------------|--------|----|-----------|
| CURL 3 GREEN 093 Low Profile Multi-purpose Dairy | 997mm | \$ | 11,451.00 |
| CURL 3 GREEN 125 Low Profile Multi-purpose Dairy | 1310mm | \$ | 12,392.00 |
| OFFFLIP 3 GREEN 093 Dairy Case (10 amp) | 997mm | \$ | 11,981.00 |
| OFFFLIP 3 GREEN 125 Dairy Case (10 amp) | 1310mm | \$ | 13,112.00 |
| OFFFLIP 3 GREEN 187 Dairy Case (15 amp) | 1935mm | \$ | 16,876.00 |
| ONWAVE 3 GREEN 5E/W 093 High Performance Multideck Meat / Dairy Case (10 amp) | 997mm | \$ | 14,509.00 |
| Product Stops 10440B x 5 | | \$ | 272.00 |
| ONWAVE 3 GREEN 5E/W 125 High Performance Multideck Meat / Dairy Case (10 amp) | 1310mm | \$ | 16,038.00 |
| Product Stops 10440C x 5 | | \$ | 309.00 |
| ONWAVE 3 GREEN 5E/W 187 High Performance Multideck Meat / Dairy Case (15 amp) | 1935mm | \$ | 19,713.00 |
| Product Stops 10440B x 10 | | \$ | 544.00 |
| ONWAVE 3 GREEN 5E/W 250 High Performance Multideck Meat / Dairy Case (15 amp) | 2560mm | \$ | 26,548.00 |
| Product Stops 10440C x 10 | | \$ | 617.00 |
| ONWAVE 3 GREEN 4E/Mir/B 093 High Performance Multideck Meat / Produce Case (10 amp) | 997mm | \$ | 14,700.00 |
| ONWAVE 3 GREEN 4E/Mir/B 125 High Performance Multideck Meat / Produce Case (10 amp) | 1310mm | \$ | 16,405.00 |
| ONWAVE 3 GREEN 4E/Mir/B 187 High Performance Multideck Meat / Produce Case (15 amp) | 1935mm | \$ | 20,051.00 |
| ONWAVE 3 GREEN 4E/Mir/B 250 High Performance Multideck Meat / Produce Case (15 amp) | 2560mm | \$ | 26,636.00 |
| ONWAVE3 ECO HP 5E/W 125 Multideck, DG, LED lights to canopy & mullions | 1310mm | \$ | 16,479.00 |
| ONWAVE3 ECO HP 5E/W 187 Multideck, DG, LED lights to canopy & mullions | 1935mm | \$ | 21,683.00 |
| ONWAVE3 ECO HP 5E/W 250 Multideck, DG, LED lights to canopy & mullions | 2560mm | \$ | 25,196.00 |
| CAPTUR 150 Dual Temperature, glass wall, sliding lid, island display. | 1500mm | \$ | 14,244.00 |
| CAPTUR 200 Dual Temperature, glass wall, sliding lid, island display. | 2000mm | \$ | 15,479.00 |
| SOUND TOP 2100mm Over Hanging Freezer Cabinet | 2100mm | \$ | 18,772.00 |
| ALL PRICES PLUS GST (10%) CABINETS ARE CRATED EX PERTH – PLUS FREIGHT - PRICES OF OTHER BONNET NEVE PRODUCTS AVAILABLE ON REQUEST | | | |

| <u>Model/Description</u> | <u>Length</u> | | |
|------------------------------------------------------------------------------------------------------------------------------------------|---------------|----|-----------|
| Flex LS - Island Table | 1250mm | \$ | 10,496.00 |
| *Flex B+1 - Island table with 1 shelf | 1250mm | \$ | 12,436.00 |
| Flex B+2 - Island Table with 2 shelves | 1250mm | \$ | 12,716.00 |
| *Flex B+3 - Island Table with 3 shelves. | 1250mm | \$ | 14,803.00 |
| *TWICE B+1 | 1250mm | \$ | 25,519.00 |
| *TWICE B+1 | 1875mm | \$ | 33,766.00 |
| *TWICE B+1 | 2500mm | | |
| *TWICE B+2 | 1875mm | | |
| *TWICE B+2 | 2500mm | \$ | 35,750.00 |
| *TWICE B+2 | 2500mm | \$ | 42,483.00 |
| * Non stock item – available on request | | | |
| ALL PRICES PLUS GST (10%) | | | |
| CABINETS ARE CRATED EX PERTH – PLUS FREIGHT | | | |
| PRICES OF OTHER EURO'CRYOR PRODUCTS AVAILABLE ON REQUEST | | | |
| ALL PRICES PLUS GST (10%) CABINETS ARE CRATED EX PERTH – PLUS FREIGHT - PRICES OF OTHER BONNET NEVE PRODUCTS AVAILABLE ON REQUEST | | | |

CRIOCABIN
TASTE PRESERVATION

Enixe List Prices

| <u>Model/Description</u> | <u>Length</u> | | |
|---------------------------------------------------|---------------|----|-----------|
| ENIXE EI 100 Delicatessen | 1017mm | \$ | 13,671.00 |
| ENIXE EI 100 Delicatessen | 1330mm | \$ | 14,818.00 |
| ENIXE EI 100 Delicatessen | 1955mm | \$ | 18,875.00 |
| ENIXE EI 100 Delicatessen | 2580mm | \$ | 21,859.00 |
| ENIXE EI 100 Delicatessen | 3205mm | \$ | 26,137.00 |
| ENIXE EI 100 Delicatessen | 3830mm | \$ | 29,797.00 |
| * ENIXE EI 100 Delicatessen outside corner 45deg. | | \$ | 13,186.00 |
| ENIXE EI 100 Delicatessen outside corner 90deg. | | \$ | 22,050.00 |
| * ENIXE EI 100 Delicatessen inside corner 45deg. | | \$ | 16,214.00 |
| * ENIXE EI 100 Delicatessen inside corner 90deg. | | \$ | 24,490.00 |
| ENIXE EI 250 M1 rated Meat Case | 1875mm | \$ | 21,830.00 |
| ENIXE EI 250 M1 rated Meat Case | 2580mm | \$ | 25,019.00 |
| ENIXE EI 250 M1 rated Meat Case | 3205mm | \$ | 28,959.00 |
| ENIXE EI 250 M1 rated Meat Case | 3830mm | \$ | 33,310.00 |
| ENIXE EI 400 BM Hot Case (Bain Marie) | 1330mm | \$ | 17,273.00 |
| *ENIXE EI 400 BM Hot Case (Bain Marie) | 1955mm | \$ | 21,683.00 |
| *ENIXE EI 400 BM Hot Case (Bain Marie) | 2580mm | \$ | 28,606.00 |
| CASTORS (Kit of 4) | | \$ | 485.00 |
| ENIXE / ERGO PLUS Joining Kits | | \$ | 250.00 |

Elisir List Prices

| | | | |
|------------------------------------------------------------------------------|--------|----|-----------|
| ELISIR EL200 Square Glass Cake Display | 1017mm | \$ | 18,992.00 |
| ELISIR EL200 Square Glass Cake Display | 1330mm | \$ | 20,418.00 |
| * ELISIR EL200 Square Glass Cake Display | 2580mm | \$ | 32,222.00 |
| * INDICATES NOT A STANDARD STOCK CASE. LEAD TIME APPROX. 12 WEEKS FROM ORDER | | | |

| <u>Esprit List Prices</u> | <u>Model</u> | <u>Length</u> | | |
|------------------------------------------------------------------------------|----------------------------------|---------------|----|-----------|
| | ESPRIT 200 Deli / Sandwich | 1017mm | \$ | 14,524.00 |
| | ESPRIT 200 Deli / Sandwich | 1330mm | \$ | 15,317.00 |
| | ESPRIT 200 Deli / Sandwich | 1955mm | \$ | 19,242.00 |
| | ESPRIT 210 Deli / Sandwich | 2892mm | \$ | 23,241.00 |
| | * ESPRIT 210 Salad Bar | 1017mm | \$ | 16,332.00 |
| | ESPRIT 210 Salad Bar | 1330mm | \$ | 17,228.00 |
| | ESPRIT 210 Salad Bar | 1955mm | \$ | 21,741.00 |
| | * ESPRIT 210 Salad Bar | 2892mm | \$ | 26,710.00 |
| | ESPRIT 300 Pastry | 1017mm | \$ | 17,743.00 |
| | * ESPRIT 300 Pastry | 1955mm | \$ | 24,387.00 |
| | * ESPRIT 300 Pastry | 2892mm | \$ | 33,413.00 |
| | ESPRIT 400 Bain Marie (Hot) | 1330mm | \$ | 17,287.00 |
| | * ESPRIT 400 Bain Marie (Hot) | 1955mm | \$ | 21,932.00 |
| | * ESPRIT 600 Serving Counter | 625mm | \$ | 4,998.00 |
| | * ESPRIT 600 Serving Counter | 937mm | \$ | 5,718.00 |
| | CASTORS (Kit of 4) | | \$ | 485.00 |
| | EXPRESS / ERGO PLUS Joining Kits | | \$ | 250.00 |
| * INDICATES NOT A STANDARD STOCK CASE. LEAD TIME APPROX. 12 WEEKS FROM ORDER | | | | |

| <u>Model</u> | <u>Length</u> | | | |
|--------------------------------------------------------------------------------|---------------|----|-----------|--|
| ERGO ER100 Delicatessen | 1037mm | \$ | 12,524.00 | |
| ERGO ER100 Delicatessen | 1350mm | \$ | 13,524.00 | |
| ERGO ER100 Delicatessen | 1975mm | \$ | 16,538.00 | |
| ERGO ER100 Delicatessen | 2600mm | \$ | 19,816.00 | |
| ERGO ER100 Delicatessen | 3225mm | \$ | 23,829.00 | |
| ERGO ER100 Delicatessen | 3850mm | \$ | 27,004.00 | |
| *ERGO ER100 Delicatessen inside corner | 45deg. | \$ | 13,465.00 | |
| *ERGO ER100 Delicatessen inside corner | 90deg. | \$ | 22,609.00 | |
| *ERGO ER100 Delicatessen outside corner | 45deg. | \$ | 16,802.00 | |
| ERGO ER100 Delicatessen outside corner | 90deg. | \$ | 25,549.00 | |
| *ERGO ER300 Pastry | 1350mm | \$ | 16,949.00 | |
| *ERGO ER300 Pastry | 1975mm | \$ | 22,609.00 | |
| ERGO ER400 BM Hot Case (bain marie) | 1350mm | \$ | 17,905.00 | |
| ERGO ER400 BM Hot Case (bain marie) | 1975mm | \$ | 22,124.00 | |
| * ERGO ER400 BM Hot Case (bain marie) | 2600mm | \$ | 31,855.00 | |
| CASTORS (Kit of 4) | | \$ | 470.00 | |
| ERGO Joining Kits | | \$ | 250.00 | |
| * INDICATES NOT A STANDARD STOCK CASE. LEAD TIME APPROX. 12 WEEKS FROM ORDER | | | | |
| ALL PRICES PLUS GST (10%) - CABINETS ARE CRATED EX PERTH – PLUS FREIGHT | | | | |
| PRICES OF OTHER CREATIVE PRODUCTS AVAILABLE ON REQUEST | | | | |

| <u>Model/Description</u> | <u>Length</u> | | | |
|--------------------------------------------------------------------------------|--------------------|----|-----------|--|
| FLAT - Island Merchandiser | 1270mm | \$ | 13,789.00 | |
| SPRING Delicatessen | 1350mm | \$ | 15,670.00 | |
| SPRING Delicatessen | 1663mm | \$ | 18,360.00 | |
| SPRING Delicatessen | 1975mm | \$ | 19,595.00 | |
| SPRING Delicatessen | 2600mm | \$ | 24,005.00 | |
| SPRING Delicatessen | 3225mm | \$ | 27,092.00 | |
| SPRING Delicatessen | 3850mm | \$ | 29,841.00 | |
| SPRING OUTSIDE CORNER "R" Delicatessen | 2070 (incl corner) | \$ | 29,826.00 | |
| SPRING HOT CASE Delicatessen | 1350mm | \$ | 18,728.00 | |
| SWING Patisserie | 1038mm | \$ | 13,539.00 | |
| SPRING Joining Kits | | \$ | 250.00 | |
| CASTORS (Kit of 4) | | \$ | 485.00 | |
| * Non stock item – available on request | | | | |
| ALL PRICES PLUS GST (10%) - CABINETS ARE CRATED EX PERTH – PLUS FREIGHT | | | | |

24 hour Production (Air / Water °)
21 °C / 10 °C 32 °C / 21 °C

MODEL

SOTTO SERIES - SPRAY SYSTEM, OCTAGONAL CUBES

| | | | |
|-------------------------------------------|-------|-------|-------------|
| UG30 | 31 kg | 25 kg | \$ 3,339.00 |
| UG50 | 57 kg | 43 kg | \$ 4,196.00 |
| UG65 | 65 kg | 58 kg | \$ 4,637.00 |
| UG80 | 85 kg | 67 kg | \$ 5,027.00 |
| Optional Legs for Sotto Series (set of 4) | | | \$ 189.00 |

DICE CUBE - SELF CONTAINED

| | | | |
|----------------------------------|-------|-------|-------------|
| U080 - Full dice (Replaces QM45) | 40 kg | 28 kg | \$ 4,990.00 |
|----------------------------------|-------|-------|-------------|

NEO SERIES

| | | | |
|-------------------------------------------------|--------|--------|-------------|
| U140 - Full dice | 55 kg | 41 kg | \$ 5,632.00 |
| U140 - 1/2 dice | 55 kg | 41 kg | \$ 5,632.00 |
| U190 - Full dice | 79 kg | 60 kg | \$ 5,960.00 |
| U190 - 1/2 dice | 79 kg | 60 kg | \$ 5,960.00 |
| U240 - Full dice | 87 kg | 68 kg | \$ 6,514.00 |
| U240 - 1/2 dice | 87 kg | 68 kg | \$ 6,514.00 |
| U310 - Full dice | 132 kg | 103 kg | \$ 7,938.00 |
| U310 - Half dice | 135 kg | 107 kg | \$ 7,938.00 |
| U310 - Regular cube | 120 kg | 93 kg | \$ 8,190.00 |
| Optional 30mm high feet for U Series (set of 4) | | | \$ 113.00 |

M SERIES

| | | | |
|-----------------------------------------------------------------------------------------|--------|--------|--------------|
| M420 Full Dice Bin Model to suit: A320, A420 or A570 (Requires adapter plate K00365) | 176 kg | 132 kg | \$ 7,006.00 |
| M500 Full Dice Bin Model to suit: A400 or A570 | 214 kg | 169 kg | \$ 7,547.00 |
| M700 Full Dice Bin Model to suit: A400 or A570 | 290 kg | 228 kg | \$ 8,757.00 |
| M1000 Full Dice Bin model to suit A570 or A970 (Requires adapter plate K00458) | 437 kg | 374 kg | \$ 11,995.00 |
| M1400 Full Dice Bin model to suit A970 | 645 kg | 479 kg | \$ 14,452.00 |

INDIGO SERIES - TO FIT TIGHT SPACES - MODULAR

| | | | |
|-----------------------------------------------------------------------------------------|--------|--------|-------------|
| I322 Full Dice Bin Model to suit: A320, A420 or A570 (Requires adapter plate K00472) | 146 kg | 98 kg | \$ 7,711.00 |
| I522 Full Dice | 207 kg | 150 kg | \$ 8,077.00 |
| I522 Half Dice Bin Model to suit: A420 or A570 (Requires adapter plate K00470) | 211 kg | 162 kg | \$ 8,077.00 |

INDIGO SERIES - REGULAR WIDTH MODULAR

| | | | |
|-----------------------------------------------------------------------------------|--------|--------|--------------|
| I450 Full Dice Bin Model to suit: A400 or A570 | 183 kg | 139 kg | \$ 8,228.00 |
| I606 Full Dice | 275 kg | 231 kg | \$ 9,916.00 |
| I606 Half Dice Bin model to suit A570 | 277 kg | 261 kg | \$ 9,916.00 |
| I906 Full Dice | 381 kg | 289 kg | \$ 13,041.00 |
| I906 Half Dice | 409 kg | 309 kg | \$ 13,041.00 |
| I906 Large Dice Bin model to suit A570 or A970 (Requires adapter plate K00470) | 357 kg | 278 kg | \$ 13,041.00 |
| I1106 Full Dice | 497 kg | 368 kg | \$ 14,616.00 |
| I1106 Half Dice Bin model to suit A570 or A970 (Requires adapter plate K00470) | 523 kg | 379 kg | \$ 14,616.00 |

24 hour Producti on (Air / Water °)
24 hour Producti on (Air / Water °)

| MODEL | 21 °C / 10 °C | 32°C / 21°C | |
|--------------------------------------------------------------------------|----------------------|--------------------|--------------|
| INDIGO SERIES - THE WIDE BOYS - MODULAR | | | |
| I1400 Full Dice | 653 kg | 503 kg | \$ 16,909.00 |
| I1400 Half Dice | 675 kg | 514 kg | \$ 16,909.00 |
| Bin model to suit: A970 or F1300 | | | |
| I1800 Half Dice | 810 kg | 634 kg | \$ 21,281.00 |
| I1800 (remote) Full Dice | | | \$ 24,910.00 |
| Price includes JC1395 condensing unit and RL20 6m pre charged piping kit | | | |
| Bin model to suit: A970 or F1300 | | | |
| IDT1900 NXT Series Full Dice | 810kg | 634kg | \$ 24,053.00 |
| FLAKERS | | | |
| RF0266A Flake Head & Bin | 77 kg | 63 kg | \$ 7,913.00 |
| RF0385A Flake Head & Bin | 152 kg | 122 kg | \$ 8,492.00 |
| RF0644A Flake Head & bin | 312 kg | 231 kg | \$ 11,126.00 |
| RFS300A Flake Head | 174 kg | 130 kg | \$ 8,593.00 |
| Bin Model to suit: A320, A420 or A570 (requires adapter plate K00472) | | | |
| RFS650A Flake Head | 305 kg | 248 kg | \$ 11,488.00 |
| Bin Model to suit: A420 or A570 (Requires adapter plate K00472) | | | |
| RFS1200 Flake Head | 545 kg | 396 kg | \$ 14,500.00 |
| Bin to Suit A570 or A970 (Requires adapter plate K00470) | | | |
| RFS2378C Remote Flake Head | 984 kg | 772 kg | \$ 45,058.00 |
| Price includes RJC2375 condensing unit and RC51 15m piping kit | | | |
| Bin to suit: A970 or F1300 | | | |
| NUGGET | | | |
| RNS 12A - Countertop Nugget Machine | 118 kg | 84 kg | \$ 12,600.00 |
| RNS 20A - Countertop Nugget Machine | 118 kg | 84 kg | \$ 15,032.00 |
| RNS0244A - Nugget Head & Bin | 78 kg | 53 kg | \$ 9,374.00 |
| RNS0385A - Nugget Head & Bin | 136 kg | 112 kg | \$ 10,634.00 |
| RNS0308A - Nugget Head | 143 kg | 114 kg | \$ 8,795.00 |
| Bin Model to suit: A320, A420 | | | |
| RNS0608A - Nugget Head | 266 kg | 204 kg | \$ 11,151.00 |
| RNS1008A | 474 kg | 374 kg | \$ 16,670.00 |
| ICE STORAGE BINS | | | |
| A320 | 95 kg | | \$ 2,205.00 |
| A400 | 132 kg | | \$ 2,394.00 |
| A420 | 141 kg | | \$ 2,419.00 |
| A570 | 195 kg | | \$ 2,734.00 |
| K-00472 Adapter Plates: | | | |
| A970 | 322 kg | | \$ 3,893.00 |
| K-00470 Adapter Plates: | | | |
| F700 | 308 kg | | \$ 9,198.00 |
| F1300 | 599 kg | | \$ 11,579.00 |
| F1325 | 601 kg | | \$ 12,335.00 |
| KOOLAIRE BINS | | | |
| K420 | 141 kg | | \$ 2,117.00 |
| K570 | 195 kg | | \$ 2,407.00 |

ICE DISPENSERS

| <u>MANITOWOC</u> | | | |
|------------------------------|--------|----|-----------|
| SFA291 Ice & Water Dispenser | 82 kg | \$ | 13,129.00 |
| SPA160 Ice Dispenser | 54 kg | \$ | 9,513.00 |
| SPA310 Ice Dispenser | 82 kg | \$ | 11,542.00 |
| <u>KLOPPENBERG</u> | | | |
| DISP500 | 294 kg | \$ | 27,909.00 |
| DISP1000 | 490 kg | \$ | 36,200.00 |

KLOPPENBERG ICE TRANSPORTATION SYSTEMS

| | | | |
|----------------------|------------------|----|-----------|
| SHUTTLE PLUS SPS 1 | 227kg - 1 Cart | \$ | 16,267.00 |
| SHUTTLE PLUS SPS 1-G | 408kg - 1 Cart | \$ | 18,056.00 |
| IFS1700-250 | 826 kg - 2 Carts | \$ | 25,817.00 |
| PCC-250 | 114 kg Poly Cart | \$ | 3,251.00 |
| TOTES - SET OF 6 | | \$ | 1,531.00 |

ACCESSORIES

| | | | |
|--------------------------------------------------------------|--|----|--------|
| LUMINICE II GROWTH INHIBITOR KIT TO SUIT I322 - I1106 | | \$ | 958.00 |
| LUMINICE II GROWTH INHIBITOR KIT TO SUIT I1406 - I1800 | | \$ | 958.00 |
| LUMINICE II GROWTH INHIBITOR KIT TO SUIT NEO U-I40 - U310 | | \$ | 958.00 |

Filter Assemblies:

| | | | |
|------------------------------------------------------------------------|--|----|----------|
| BR10 FILTER SYSTEM TO SUIT U, Q, & INDIGO MODELS TO I606 | | \$ | 265.00 |
| BR20 FILTER SYSTEM TO SUIT INDIGO SERIES I906 – S3072 | | \$ | 340.00 |
| BR30 FILTER SYSTEM SUITS LARGER MACHINES IN EXTREMELY POOR WATER AREAS | | \$ | 554.00 |
| K-00146 - Ice Bagger Assembly | | \$ | 1,058.00 |
| K00472 - Adapter plate I322 / I522 to A400 / A570 bin | | \$ | 504.00 |
| K00470 - Adapter plate I450 - I1200 to A970 Bin | | \$ | 844.00 |
| K00138 - Castor kit for A400 / A570 Bin | | \$ | 907.00 |
| K00063 - Castor kit for NEO Ice Machines | | \$ | 466.00 |

Note: Accessories subject to spare part discount & freight charges when purchased separately from equipment.
 All Ice Machines supplied boxed, Ex Perth excl. freight & GST



1800 813 987



Model

| | |
|-----------------------------------------------------------|--------------|
| FENICE 9 - 9-Tub Scoop Icecream | \$ 10,849.00 |
| Optional 5 L s/s food pans. 9 @ \$60.00 each. | \$ 794.00 |
| FENICE 13 - 13-Tub Scoop Icecream | \$ 11,907.00 |
| Optional 5 L s/s food pans. 13 @ \$60.00 each. | \$ 1,147.00 |
| DELIGHT 7 LITE - 7 Tub Scoop Icecream | \$ 7,644.00 |
| DELIGHT 7 PRIME - 7 Tub Scoop Icecream | \$ 8,908.00 |
| DELTA 725AT Curved Glass Chest Freezer | \$ 1,926.00 |
| DELTA 735AT Curved Glass Chest Freezer | \$ 2,720.00 |
| IARP JOY 30 LITE Semivertical multi-deck, R290. White | \$ 6,115.00 |
| IARP JOY 30 PRIME Semivertical multi-deck, R290. Black | \$ 7,438.00 |
| EIS 52 1 Dr. Upright Glass Door Medium Temp | \$ 3,910.00 |
| ASIA 55 1 Dr. Upright Glass Door Freezer | \$ 5,219.00 |
| ASIA 115 2Dr. Upright Glass Door Freezer | \$ 13,215.00 |
| ASIA 165 3 Dr. Upright Glass Freezer | \$ 20,154.00 |
| STELLA 150 Island Slide Lid Freezer (R290 Refrigerant) | \$ 3,763.00 |
| STELLA 200 Island Slide Lid Freezer (R290 Refrigerant) | \$ 4,675.00 |
| STELLA 250 Island Slide Lid Freezer (R290 Refrigerant) | \$ 5,601.00 |
| KREA 190.9 Curved Glass Island Freezer TG end. | \$ 6,321.00 |
| KREA 260.9 Curved Glass Island Freezer 2500mm Length | \$ 7,188.00 |
| SVABA 150 Dual Temperature Island with lids | \$ 8,570.00 |
| SVABA 200 Dual Temperature Island with lids | \$ 9,805.00 |

CABINETS ARE CRATED EX PERTH – PLUS FREIGHT

PRICES OF OTHER IARP PRODUCTS AVAILABLE ON REQUEST



18 gr FULL ICE CUBE



| ICE CUBE MACHINES | Production (kg) | Storage (kg) | Dimensions (mm) | Price |
|-------------------|-----------------|--------------|---------------------|-------------|
| C20 | 20 | 6 | 365W x 495D x 600H | \$ 2,028.00 |
| C30 | 30 | 10 | 365W x 495D x 690H | \$ 2,568.00 |
| C37 | 37 | 16 | 500W x 585D x 685H | \$ 2,964.00 |
| C50 | 50 | 25 | 500W x 585D x 795H | \$ 3,342.00 |
| C60 | 60 | 40 | 740W x 605D x 915H | \$ 4,488.00 |
| C80 | 80 | 40 | 740W x 605D x 915H | \$ 4,914.00 |
| C100 | 100 | 60 | 740W x 605D x 1015H | \$ 5,340.00 |
| C120 | 120 | 75 | 840W x 745D x 1015H | \$ 5,940.00 |
| C150 | 150 | 75 | 840W x 745D x 1075H | \$ 6,468.00 |
| C175 | 175 | 75 | 840W x 745D x 1075H | \$ 6,950.00 |
| KQ250 | 250 | n/a | 760W x 620D x 690H | \$ 5,880.00 |
| KQ350 | 350 | n/a | 760W x 620D x 690H | \$ 6,894.00 |
| IMS30 | 30 | 15 | 430W x 530D x 820H | \$ 1,980.00 |
| IMS55 | 55 | 26 | 500W x 550D x 800H | \$ 2,700.00 |
| IMS120 | 120 | 45 | 700W x 700D x 1000H | \$ 4,320.00 |
| IMS150 | 150 | n/a | 560W x 640D x 520H | \$ 4,908.00 |
| IMS200 | 230 | n/a | 760W x 670D x 550H | \$ 5,868.00 |
| IMS450 | 450 | n/a | 760W x 670D x 800H | \$ 8,200.00 |

| ICE FLAKE MACHINES | Production (kg) | Storage (kg) | Dimensions (mm) | Price |
|--------------------|-----------------|--------------|---------------------|--------------|
| SB90 | 100 | 20 | 500W x 550D x 770H | \$ 5,520.00 |
| SB90M | 100 | 30 | 500W x 550D x 850H | \$ 5,712.00 |
| SB135 | 135 | 40 | 760W x 600D x 9350H | \$ 6,380.00 |
| SB155 | 155 | 115 | 900W x 750D x 1075H | \$ 6,972.00 |
| S135 | 135 | n/a | 682W x 702D x 450H | \$ 5,484.00 |
| S230A | 230 | n/a | 682W x 702D x 450H | \$ 7,476.00 |
| S350A | 350 | n/a | 682W x 702D x 450H | \$ 9,360.00 |
| S600A | 500 | n/a | 682W x 702D x 655H | \$ 11,100.00 |

| BINS | Production (kg) | Storage (kg) | Dimensions (mm) | Price |
|--------|-----------------|--------------|----------------------|-------------|
| BIN150 | n/a | 150 | 560W x 830D x 900H | \$ 2,160.00 |
| BIN250 | n/a | 250 | 760W x 830D x 980H | \$ 2,520.00 |
| BIN500 | n/a | 350 | 1230W x 800D x 1120H | \$ 3,240.00 |

| Product Code | Description | Category | List Price |
|--------------|----------------------------------------------------------------------------------|----------------------------|-------------|
| CB507-A | Polar Chilled Display with 2 Curved Glass Doors - 86Ltr_white | Refrigeration Shop Display | \$ 1,176.00 |
| CB509-A | Polar Chilled Display with Curved Glass Door - 235Ltr_white | Refrigeration Shop Display | \$ 2,205.00 |
| CD080-A | Polar Refrigerator Undercounter Cabinet 150Ltr St/St Body & Door | Refrigeration Kitchen | \$ 1,286.00 |
| CD081-A | Polar Freezer Undercounter Cabinet 140Ltr St/St Body & Door | Refrigeration Kitchen | \$ 1,580.00 |
| CD082-A | Polar 400Ltr St/St Fridge | Refrigeration Kitchen | \$ 2,021.00 |
| CD083-A | Polar St/St Freezer - 365Ltr | Refrigeration Kitchen | \$ 2,168.00 |
| CD084-A | Polar 600Ltr St/St Fridge | Refrigeration Kitchen | \$ 2,462.00 |
| CD085-A | Polar 600Ltr St/St Freezer | Refrigeration Kitchen | \$ 2,609.00 |
| CD086-A | Polar Glass Door Refrigerator - 150Ltr | Refrigeration Shop Display | \$ 1,323.00 |
| CD087-A | Polar Glass Door Refrigerator - 400Ltr | Refrigeration Shop Display | \$ 1,764.00 |
| CD088-A | Polar Glass Door Refrigerator - 600Ltr | Refrigeration Shop Display | \$ 2,205.00 |
| CD229-A | Polar Refrigerated Display Merchandiser - 120Ltr (R600a) | Refrigeration Shop Display | \$ 1,543.00 |
| CD230-A | Polar Refrigerated Display Merchandiser - 160Ltr (R600a) | Refrigeration Shop Display | \$ 1,690.00 |
| CD610-A | Polar Undercounter Refrigerator - 150Ltr 5.3cu ft-AUS PLUG | Refrigeration Kitchen | \$ 1,139.00 |
| CD611-A | Polar Undercounter Freezer - 140Ltr 5cu ft-AUS PLUG | Refrigeration Kitchen | \$ 1,286.00 |
| CD612-A | Polar Upright Refrigerator - 400Ltr 14.1cuft-AUS PLUG | Refrigeration Kitchen | \$ 1,580.00 |
| CD613-A | Polar Upright Freezer - 365Ltr 12.88cuft-AUS PLUG | Refrigeration Kitchen | \$ 1,727.00 |
| CD614-A | Polar Upright Refrigerator - 600Ltr 21.2cuft-AUS PLUG | Refrigeration Kitchen | \$ 2,021.00 |
| CD615-A | Polar Upright Freezer - 600Ltr 21.2cuft-AUS PLUG | Refrigeration Kitchen | \$ 2,168.00 |
| CD984-A | Polar Refrigerator Upright Display Cabinet 944Ltr White Body Double Glass Doors | Refrigeration Shop Display | \$ 2,940.00 |
| CE202-A | Polar wine cooler-11 bottles(Mechanical) - Black | Beverage Service | \$ 441.00 |
| CE203-A | Polar Wine Cooler - 28 Bottles (Mechanical) Glass Door Metal Racks | Refrigeration Bar Display | \$ 588.00 |
| CE204-A | Polar Wine Cooler - 48 bottles (Mechanical) Glass Door Metal Racks | Refrigeration Bar Display | \$ 735.00 |
| CE205-A | Polar Single Door Back Bar Cooler St/St exterior Alu Interior with LED Lighting | Refrigeration Bar Display | \$ 1,323.00 |
| CE206-A | Polar Double Hinged Door Back Bar Cooler St/St exterior Al Interior LED Lighting | Refrigeration Bar Display | \$ 1,617.00 |
| CE207-A | Polar Triple Hinged Door Back Bar Cooler St/St exterior Al Interior LED Lighting | Refrigeration Bar Display | \$ 2,058.00 |
| CE210-A | Polar Chest Freezer - 390Ltr | Refrigeration Kitchen | \$ 1,396.00 |
| CE211-A | Polar Chest Freezer - 466Ltr | Refrigeration Kitchen | \$ 1,617.00 |
| CE212-A | Polar Chest Freezer - 598Ltr | Refrigeration Kitchen | \$ 1,837.00 |
| CE217-A | Polar wine chiller dual zone st/st door with lock - 92 bottle | Refrigeration Bar Display | \$ 2,205.00 |
| CE218-A | Polar wine chiller dual zone st/st door with lock - 155 bottle | Beverage Service | \$ 2,793.00 |
| CE322-A | Polar Hotel Room Refrigerator - 30Ltr Black | Refrigeration Bar Display | \$ 485.00 |
| CF750-A | Polar Undercounter Glass Door Display Cooler - 88Ltr | Refrigeration Shop Display | \$ 588.00 |
| CF759-A | Polar Double Sliding Door Back Bar Cooler Undercounter 870mmH - AUS PLUG | Refrigeration Bar Display | \$ 1,323.00 |
| CF760-A | Polar Single Chilled Juice Dispenser - Grey (M)- Corolla-1S Grey | Beverage Machines | \$ 1,249.00 |
| CF761-A | Polar Double Chilled Drinks Dispenser Grey - 355watts | Beverage Machines | \$ 1,543.00 |
| CG841-A | Polar REFRIGERATED Deli Display Curved Glass - 915mm | Refrigeration Shop Display | \$ 4,851.00 |
| CK477-A | Polar Double Door Upright Back Bar Cooler Hinged S/S | Refrigeration Bar Display | \$ 3,087.00 |
| CK478-A | Polar Double Door Upright Back Bar Cooler Sliding S/S | Refrigeration Bar Display | \$ 3,087.00 |
| CK479-A | Polar Single Door Upright Back Bar Cooler St/St | Refrigeration Kitchen | \$ 2,058.00 |
| CK480-A | Polar Cabinet Freezer - 600Ltr | Refrigeration Kitchen | \$ 3,013.00 |
| CK490-A | Polar Premium Bar Fridge 2 Door | Refrigeration Bar Display | \$ 3,969.00 |
| CK491-A | Polar Premium Bar Fridge 3 Door | Refrigeration Bar Display | \$ 4,557.00 |
| CK492-A | Polar Premium Bar Fridge 4 Door | Refrigeration Bar Display | \$ 5,145.00 |
| CK640-A | Polar Countertop Blast Chiller/Freezer - 5/8kg GN2/3 | Refrigeration Kitchen | \$ 3,675.00 |

| Product Code | Description | Category | List Price |
|--------------|----------------------------------------------------------------------------------|----------------------------|-------------|
| CL108-A | Polar Refrigerated Counter with Marble Work Top - 2 doors 240Ltr | Refrigeration Kitchen | \$ 2,425.00 |
| CL109-A | Polar Refrigerated Counter with Marble Work Top - 3 doors 368Ltr | Refrigeration Kitchen | \$ 2,866.00 |
| CM359-A | Polar Undercounter Stainless Steel Wine Cooler with lock-54 bottles | Refrigeration Bar Display | \$ 1,470.00 |
| CM531-A | Polar Chest Freezer - 516Ltr - R600a | Refrigeration Kitchen | \$ 1,690.00 |
| CM532-A | Polar Chest FREEZER - 587Ltr - R290a | Refrigeration Kitchen | \$ 1,984.00 |
| CP728-A | Polar Tapas Showcase 6x1/3GN | Refrigeration Shop Display | \$ 2,058.00 |
| CS627-A | Polar Chilled Display Cabinet Black - 68Ltr | Refrigeration Shop Display | \$ 955.00 |
| CS628-A | Polar Chilled Display Cabinet Black - 98Ltr | Refrigeration Shop Display | \$ 1,102.00 |
| CW195-A | Polar Gastro REFRIGERATOR Double Door Upright Stable Door | Refrigeration Kitchen | \$ 4,116.00 |
| CW198-A | Polar Gastro Refrigerator Double Door Upright Glass Door | Refrigeration Bar Display | \$ 4,116.00 |
| DA994-A | Polar Dual Temp Counter with Single Drawer - 2 x 1/1GN Capacity | Refrigeration Kitchen | \$ 2,940.00 |
| DA995-A | Polar Dual Temp Counter with Single Drawer - 3 x 1/1GN Capacity | Refrigeration Kitchen | \$ 3,675.00 |
| DA996-A | Polar Dual Temp Counter with 2 Drawers - 2 x 1/1GN Capacity per Drawer | Refrigeration Kitchen | \$ 4,410.00 |
| DA997-A | Polar Dual Temp Counter with 2 Drawers. 3 x 1/1GN Capacity per drawer | Refrigeration Kitchen | \$ 5,145.00 |
| DB950-A | Polar REFRIGERATED Deli Showcase - 900mm | Refrigeration Shop Display | \$ 5,145.00 |
| DB951-A | Polar REFRIGERATED Deli Showcase - 1200mm | Refrigeration Shop Display | \$ 5,880.00 |
| DB952-A | Polar REFRIGERATED Deli Showcase - 1500mm | Refrigeration Shop Display | \$ 6,615.00 |
| DB959-A | Polar REFRIGERATED Deli Showcase - 1800mm | Refrigeration Shop Display | \$ 7,350.00 |
| DL815-A | Polar Single Door Back Bar Chiller 870mmH - AUS PLUG | Refrigeration Bar Display | \$ 1,029.00 |
| DL816-A | Polar Double Hinge Door Back Bar Chiller 870mmH - AUS PLUG | Refrigeration Bar Display | \$ 1,323.00 |
| DL818-A | Polar Triple Hinged Door Back Bar Chiller 870mmH - AUS PLUG | Refrigeration Bar Display | \$ 1,617.00 |
| DL819-A | Polar Triple Sliding Door Back Bar Chiller - 870mmH | Refrigeration Bar Display | \$ 1,617.00 |
| DL893-A | Polar Gastro Refrigerator Single Door Upright- 600Ltr 21cuft Ventilated AUS PLUG | Refrigeration Kitchen | \$ 3,160.00 |
| DL894-A | Polar Gastro Freezer Single Door Upright - 600Ltr 21cuft Ventilated AUS PLUG | Refrigeration Kitchen | \$ 3,454.00 |
| DL895-A | Polar Gastro Refrigerator 2 Door Upright 1200Ltr 42.4cuft Ventilated - AUS PLUG | Refrigeration Kitchen | \$ 4,116.00 |
| DL896-A | Polar Gastro Freezer 2 Door Upright - 1200L 42.4cuft Ventilated - AUS PLUG | Refrigeration Kitchen | \$ 4,557.00 |
| DL897-A | Polar Solid Double Door Freezer White Exterior - 1200Ltr 42.4cuft - AUS PLUG | Refrigeration Kitchen | \$ 3,969.00 |
| DL898-A | Polar Solid Double Door Refrigerator White Exterior - 1200Ltr 42.4cuft -AUS PLUG | Refrigeration Kitchen | \$ 3,528.00 |
| DL899-A | Polar Gastro Refrig. Single Door Upright White Exterior-600Ltr 21cuft -AUS PLUG | Refrigeration Kitchen | \$ 2,719.00 |
| DL914-A | Polar Counter GN REFRIGERATOR - 2 Doors 700mm with upstand | Refrigeration Kitchen | \$ 3,013.00 |
| DL915-A | Polar Counter GN REFRIGERATOR - 3 Doors 700mm with upstand | Refrigeration Kitchen | \$ 3,454.00 |
| DL916-A | Polar Counter GN FREEZER - 2 Doors 700mm with upstand | Refrigeration Kitchen | \$ 3,307.00 |
| DL917-A | Polar Counter GN FREEZER - 3 Doors 700mm with upstand | Refrigeration Kitchen | \$ 3,748.00 |
| DM071-A | Polar Beer cooler-16 bottles Glass Door white racks | Refrigeration Shop Display | \$ 441.00 |
| DM075-A | Polar Refrigerator Upright Display Cabinet 218Ltr White Body with Glass Door | Refrigeration Shop Display | \$ 1,139.00 |
| DM076-A | Polar Refrigerator Upright Display Cabinet 348Ltr White Body with Glass Door | Refrigeration Shop Display | \$ 1,580.00 |
| DN492-A | Polar Blast Chiller 3 x GN | Refrigeration Kitchen | \$ 5,733.00 |
| DN494-A | Polar Blast Chiller 10 x GN | Refrigeration Kitchen | \$ 8,085.00 |
| DP288-A | Polar Chilled Display with 2 Curved Glass Doors - Black 86Ltr | Refrigeration Shop Display | \$ 1,102.00 |
| DP289-A | Polar Chilled Display with Curved Glass Door - Black 235Ltr | Refrigeration Shop Display | \$ 2,205.00 |

| Product Code | Description | Category | List Price |
|--------------|----------------------------------------------------------------------------|----------------------------|-------------|
| G211-A | Polar Chilled Display Cabinet Black - 68Ltr | Refrigeration Shop Display | \$ 955.00 |
| G590-A | Polar REFRIGERATOR Single Door Upright St/St - 440Ltr | Refrigeration Kitchen | \$ 2,572.00 |
| G591-A | Polar FREEZER Single Door Upright St/St - 440Ltr | Refrigeration Kitchen | \$ 2,940.00 |
| G596-A | Polar Counter Gastro Refrigerator 2 Doors - 282Ltr AUS PLUG | Refrigeration Kitchen | \$ 2,866.00 |
| G597-A | Polar Counter Gastro Refrigerator 3 Doors - 417Ltr | Refrigeration Kitchen | \$ 3,307.00 |
| G598-A | Polar Counter Gastro REFRIGERATOR 4 Doors - 553Ltr | Refrigeration Kitchen | \$ 3,748.00 |
| G599-A | Polar Counter Gastro FREEZER 2 Doors | Refrigeration Kitchen | \$ 3,160.00 |
| G600-A | Polar Counter Gastro Freezer 3 Doors - 417Ltr | Refrigeration Kitchen | \$ 3,601.00 |
| G604-A | Polar Refrigerated 2 Door Counter Salad/Pizza Preparation (M)-AUS PLUG | Refrigeration Kitchen | \$ 2,646.00 |
| G605-A | Polar Refrigerated 3 Door Counter Salad/Pizza Preparation (M)-AUS PLUG | Refrigeration Kitchen | \$ 3,087.00 |
| G619-A | Polar Chilled Display Cabinet White - 68Ltr (M) | Refrigeration Shop Display | \$ 955.00 |
| G620-A | Polar Manual Fill Ice Cube Maker - 15kg AUS PLUG | Ice Machines | \$ 772.00 |
| G622-A | Polar 3 Door Counter with Compressor Underneath | Refrigeration Kitchen | \$ 2,719.00 |
| GC870-A | Polar Chilled Display Cabinet - 68Ltr | Refrigeration Shop Display | \$ 955.00 |
| GC871-A | Polar Chilled Display Cabinet - 98Ltr | Refrigeration Shop Display | \$ 1,102.00 |
| GD873-A | Polar Counter REFRIGERATOR 1 Door plus 2 Drawers | Refrigeration Kitchen | \$ 3,675.00 |
| GD874-A | Polar Counter REFRIGERATOR 2 Doors plus 2 Drawers | Refrigeration Kitchen | \$ 4,116.00 |
| GD875-A | Polar Refrigerated Counter Top Prep/Servery - 1200mm 3 x GN 1/3 & 1x1/2 GN | Refrigeration Kitchen | \$ 1,323.00 |
| GD876-A | Polar Refrigerated Counter Top Prep/Servery - 1500mm 5 x GN 1/3 & 1x1/2 GN | Refrigeration Kitchen | \$ 1,470.00 |
| GD877-A | Polar Refrigerated Counter Top Prep/Servery - 1800mm 8 x GN 1/3 | Refrigeration Kitchen | \$ 1,617.00 |
| GD879-A | Polar Double Door Slimline REFRIGERATOR | Refrigeration Kitchen | \$ 3,528.00 |
| GD880-A | Polar Double Door Slimline FREEZER | Refrigeration Kitchen | \$ 3,969.00 |
| GD882-A | Polar Preparation Counter 2 Door - 1.2m | Refrigeration Kitchen | \$ 3,675.00 |
| GD883-A | Polar Preparation Counter 2 Door - 1.5m | Refrigeration Kitchen | \$ 3,969.00 |
| GG217-A | Polar Cold Deli Showcase Dimension - 1200x715x1200mm Temp +2 +8 Celsius | Refrigeration Shop Display | \$ 6,247.00 |
| GG218-A | Polar Cold Deli Showcase Dimension - 1500x715x1200mm Temp +2 +8 Celsius | Refrigeration Shop Display | \$ 6,982.00 |
| GG219-A | Polar Cold Deli Showcase Dimension - 1800x715x1200mm Temp +2 +8 Celsius | Refrigeration Shop Display | \$ 7,717.00 |
| GJ447-A | Polar Single Door Upright Back Bar Cooler | Refrigeration Bar Display | \$ 1,617.00 |
| GJ448-A | Polar Double Door Upright Back Bar Cooler Sliding | Refrigeration Bar Display | \$ 2,499.00 |
| GJ449-A | Polar Double Door Upright Back Bar Cooler Hinged | Refrigeration Bar Display | \$ 2,499.00 |
| GL178-A | Polar Countertop Prep Counter with Chopping Board | Refrigeration Kitchen | \$ 1,764.00 |
| S403 | Bracket Set for DL893-A DL899-A DL894-A DA895-A DL896-A | Accessories | \$ 59.00 |
| S404 | Bracket Set for G596-A-G604-A G605-A G622-A U636-A | Accessories | \$ 81.00 |
| T315-A | Polar Manual Fill Ice Cube Maker - Max output 11kg/24hr (AUS PLUG) | Ice Machines | \$ 514.00 |
| T316-A | Polar Mains-Fill Ice Cube Maker - 20kg - AUS PLUG | Ice Machines | \$ 1,323.00 |
| U636-A | Polar 2 Door Flat St/St Top Counter (M)-AUS PLUG | Refrigeration Kitchen | \$ 2,278.00 |

AUSTWIDE SALES & RENTALS PTY LTD (ABN 55 051 202 067)

TERMS AND CONDITIONS OF SALE

1. TITLE

- a. Risk in any goods supplied by the seller to the buyer shall pass when such goods are delivered to the buyer or into custody on the buyer's behalf but the ownership of any goods supplied by the seller to the buyer shall remain with the seller until payment in full is made for the goods the subject of the contract and for all other goods supplied by the seller to the buyer.
- b. The buyer acknowledges that until payment has been made in full, that:
 - i. The buyer is in possession of the goods as bailee for the seller.
 - ii. The buyer shall store the goods separately so that they are clearly identifiable as the property of the seller.
 - iii. Any sale of the goods by the buyer to a third party will be made by the buyer as agent for the seller and all sale proceeds will be held in trust for the seller as its property.
 - iv. In the event that the buyer combines the goods with the buyers own goods or articles, the buyer does so on the condition that the resulting goods are the property of the seller.
 - v. In the event that the buyer combines the goods with goods or articles of a third party the buyer does so on the condition that, the resulting goods are deemed to be owned by the seller and third party.
 - vi. The seller reserves the right to enter the buyers premises for the purpose of repossessing any goods not paid for in accordance with these terms and conditions of sale.
- a. In the event that, contrary to these terms, the buyer disposes of, alters, destroys or otherwise deals with the goods in a manner inconsistent with the seller's ownership thereof whilst payment in full has not been made, the buyer shall account to the seller for the value of such goods so dealt with and further, the seller will be entitled to the proceeds, if any, of such goods so dealt with.

2. PAYMENT

- a. The buyer must pay for all goods to be supplied by the seller within thirty (30) days from the date of invoice.
- b. Unless the buyer has been notified by the seller in writing that the buyer holds a credit account with the seller, the seller will not deliver the goods until the buyer's payment has been received and clears.
- c. If payment is not received by the due date then the seller is entitled to charge interest on the money due but not paid at the rate of twenty per cent (20%) per annum from the date payment is due until the date payment is made.
- d. Any amount not paid in accordance with the above terms will be referred to the seller's Collection Agents or Legal Representatives. The buyer will pay to the seller any costs or expenses incurred by the seller, including Solicitors costs on a full indemnity basis, in connection with the recovery or attempted recovery of any amount owed by the buyer to the seller upon demand.
- e. All amounts payable by the buyer to the seller are to be remitted to the seller's Brisbane office at PO Box 6709 Upper Mount Gravatt, QLD 4122

3. WARRANTIES AND REPRESENTATIONS

- a. All new goods supplied are warranted to be free from defects in material and workmanship for a period of (12) months from time of delivery, with a (12) twelve month limited labour only period to run in conjunction with the parts warranty. Extended warranty is as per the Warranty terms. This warranty does not apply/extend to Used, Seconds, Ex-rental or Second and goods. These goods are sold "as is" at the risk of the buyer.
- b. To the extent permitted by law all conditions, warranties and liabilities, including those as to merchantability and fitness for purpose, implied by statute, common law or otherwise are expressly excluded. To the extent that the seller is not able to exclude such condition or warranty the liability of the seller is limited to:-
 - Replacement of the goods or the supply of equivalent goods;
 - Repair of the goods;
 - Paying to the buyer the cost of replacement of the goods or equivalent goods; or
 - Paying to the buyer the cost of repair of the goods; at the discretion of the seller.
- c. The seller is not liable for any injury, loss, or damage, direct or consequential, arising out of the use of or the inability to use the goods.
- d. Before using, the buyer shall determine suitability of the goods for the buyers intended use, the buyer assumes all risk and liability whatsoever in connection therewith.
- e. THE BUYER ACKNOWLEDGES AND DECLARES THAT THE BUYER HAS READ THESE TERMS AND CONDITIONS AND UNDERSTANDS THE SAME. NO WARRANTY OR REPRESENTATIONS HAVE BEEN MADE TO THE BUYER (OTHERWISE THAN EXPRESSLY CONTAINED HEREIN) AND NO WARRANTY ASSURANCE PROMISE OR REPRESENTATION HAS BEEN MADE REGARDING THE QUALITY FITNESS FOR USE SUITABILITY OR MERCHANTABILITY OF GOODS FOR ANY PURPOSE WHATSOEVER, AND THAT IN ALL THINGS THE BUYER HAS RELIED ON THE BUYERS OWN KNOWLEDGE AND JUDGEMENT.

4. DELAY

- a. If the seller shall state or accept any time for delivery or completion of the contract or any part thereof then such shall be approximate only and shall not be deemed to be of the essence of the contract.
- b. The seller shall not be liable for the failure to deliver or complete the contract or any delivery or completing the contract where such failure or delay is occasioned by Act of God, fire, accident, war, strike, lock-out, shortage of labour, lack of skilled labour, breakdown of plant, non-delivery of raw materials, difficulty in procuring components or materials, delays by suppliers or sub-contractors, delays in transit, delays by the buyer, legislative governmental or other prohibitions or restrictions, or any other event of any kind whatsoever which is beyond the control of the seller, and the buyer shall have no right of cancellation of the contract but shall accept delivery of the goods when the seller is reasonably able to deliver the goods having regard to the seller's commitments to other customers.

5. ACCEPTANCE

An offer or quotation by the seller shall become binding upon the seller only upon receipt written in such form as the seller may require. Order forms and other documents provided to the seller by the buyer as confirmation of orders previously placed must be clearly marked with the words "confirmation". Confirmation documents so marked will be treated as original orders. Acceptance of goods is deemed to be acceptance of these terms and conditions.

6. REJECTION

Except for defective goods supplied by the seller, goods returned for credit will only be accepted on the following conditions:

- a. Goods returned must not be obsolete, incomplete, damaged or otherwise imperfect.
- b. The amount of credit allowed in respect of the goods returned, if any, will be subject to a service charge at the seller's rate of (30%) thirty percent, unless the agreement specifically states otherwise.
- c. Goods cannot be rejected unless defective on original supply or incorrectly supplied. Goods specially produced or procured to the buyer's order cannot be rejected as being unsuitable or because they are no longer required by the buyer.
- d. No responsibility is accepted by the seller for goods lost or damaged in transit during return to the seller.
- e. No returns will be accepted for credit after the expiry of (7) seven days from date of original supply.
- f. Goods sold as used, ex-rental or second hand goods will not be accepted for credit, return, exchange or refund for any reason whatsoever.

7. DEFAULT

If the buyer:

- a. Is in breach of any of the terms and conditions of the contract, and in case of any default which may be remedied, fails to remedy the same within 7 days of receiving written notice specifying default; or
- b. Shall have any execution levied against it or become bankrupt or insolvent or commit any act of bankruptcy or enter or intend to enter into any composition or arrangement with its creditors or (in the case of a company) do any acts which would render it liable to be wound up or have a receiver appointed over its property or if it shall have a winding up order made against it or pass or attempt a resolution for winding up or be a party to the appointment of or have a manager or receiver appointed of the whole or any part of its property or undertaking. Then without prejudice to any other remedy available to the seller
 - i. The seller by written notice may forthwith enter, suspend or terminate the contract without prejudice to any other right or remedy it has at law or equity; and whether or not such notice is given, payment for all goods sold by the seller, whether delivered or not and any other moneys payable by the buyer shall immediately become due; and
 - ii. The seller may enter upon the premises where any delivered goods are situated and take possession of and remove the same without being responsible for any damage thereby caused and may resell the same and apply the proceeds in or towards payment of the purchase price. All costs and expenses of or incurred by the seller as a result of any such action shall be payable by the buyer on demand.
 - iii. Any suspension of the contract by the seller shall not prevent it terminating the contract during the period of suspension.

8. CANCELLATION

Cancellation of any order by the buyer will only be effective if accepted by the seller in writing and in any event shall be upon the condition that the buyer shall pay the seller for all work done and materials used by the seller in the execution of work on the buyer's behalf up to the date of cancellation.

9. GOVERNING LAW

The validity and interpretation of these conditions of sale and of the rights of the parties both pursuant to these conditions of sale and otherwise shall be governed by the laws of Queensland.

10. INTERPRETATION

- a. "The Seller" means Austwide Sales & Rentals Pty. Ltd, its successors or assigns.
- b. "The Buyer" means the person, firm or company which has offered to purchase the goods from the seller or to whom the seller has offered to sell the goods.
- c. "Goods" means any products or items offered for sale by the seller or sold by the seller to the buyer.
- d. "Contract" means the contract for the sale of goods entered into between the seller and the buyer and includes these "Terms and Conditions of Sale" and any quotation provided to the buyer by the seller and any further terms and conditions contained therein."
- e. "Terms and Conditions" means the terms and conditions contained in this document and any other document forming part of the contract.

11. MANUFACTURERS SPECIFICATIONS

Due to Manufacturers continuous improvements, Product Specifications may change without notice.

Call Now on 1800 813 987



WARRANTY INFORMATION

This warranty applies for calls of a breakdown service nature only, for problems of manufacturing origin. Recalls, customer related problems (power supply fluctuations, thermostat adjustments, overstocking and overloading of shelves/baskets, choked condenser etc) and any other non warranty nature calls will be charged to the service call originator at normal full rates, payable at the time of the service call.

THIS WARRANTY IS VOIDED, IF THE EQUIPMENT HAS NOT BEEN PROPERLY MAINTAINED IN ACCORDANCE WITH THE MANUFACTURER'S INSTRUCTIONS SUPPLIED WITH THE EQUIPMENT, OR THE EQUIPMENT HAS BEEN SUBJECT TO POWER SUPPLY FLUCTUATIONS, MISUSED OR TRANSPORTED IN A MANNER WHICH COULD PREJUDICE THE CORRECT OPERATION OF THE APPLIANCE.

Austwide will not pay, authorize or reimburse any costs for travelling time, callout or attendance fees, overtime/penalty or premium labour rates, or any other costs incurred or charged, other than detailed herein. This warranty specifically excludes glass, lights, elements, locks, keys, and accessories.

WARRANTY GUIDE

(12) Twelve months limited labour component.

Austwide Sales & Rentals Pty Ltd provides a limited labour warranty to compliment the manufacturer's parts only warranty. This limited labour warranty shall be restricted to the following items and at the maximum rates shown only, not including GST. Austwide will pay an amount equal to half of the callout fee for capital city metropolitan area, (or the first hour travelling time costs for country area calls.) Payment is limited to one of the preceding two options per service call, and will not be paid for subsequent calls to the same machine for the same fault.

- . Remove and replace compressor 2-4 hours
- . Remove and replace fan motor 1.5 hours
- . Remove and replace thermostat 1.5 hours
- . Allowance for reclaim and re-gas of appliance to 1000 grams of R134A / R404A \$ 48.00
- . Allowance for nitrogen, vacuum pump use on dome changes \$ 35.00

Additional compressor warranty will be limited to the supply of new parts for faulty parts at the discretion of Austwide.

Warranty will apply from the date of sale to the distributor/wholesaler, for the periods stated herein, with a (30) thirty days 'shelf life' extension period granted, to allow for items not on sold by the Distributor/wholesaler immediately upon receipt of goods, to be held in stock for a short period.

Parts will be invoiced and supplied ex Austwide's Melbourne warehouse, on the basis of "Credit on return of faulty goods" within (30) thirty days of dispatch.

Austwide will not pay for parts, not supplied by Austwide, but may authorize parts to be issued over the counter from OEM suppliers in special circumstances.

Faulty parts not received within (30) thirty days of dispatch will not be credited.

All items returned will be tested for faults and non faulty items will not be credited.

All parts will be supplied FIS to the distributor/wholesaler via general road freight. Parts requested urgent /overnight /express will be sent on the basis " Receiver pays".

Item serial number, model, description and invoice number, must be supplied by the Distributor/wholesaler for all warranty claims and must include these minimum details to be eligible for consideration. Non provision of this basic information, will delay the parts and/or credits being issued.

All parts returned should be freight prepaid by sender. Faulty parts will not be accepted as "Receiver pays" or "freight on".

Compressors should have pipework welded sealed.

Hourly rates will be paid at the average commercial applicable rates for the area.

All warranty works must be authorized with an order number from Austwide, prior to commencement of works. Any invoices received without an authority order number will be rejected.

NOTES:



Phone: 1800 813 987
Email: sales@austwiderentals.com
Fax: 03 8786 3572

VIC Warehouse: Unit 1/35 Rimfire Drive
& Showroom Hallam, VIC, 3803
(Drop in Mon — Fri)

QLD Warehouse: Yatala.
(by appointment only)

Websites: www.austwidesales.com.au

